

Aslo Electric



**INDUSTRIAL PLUGS
AND SOCKETS**

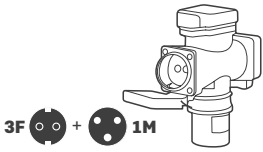
POWER ON

aslo.pt

ASAI013112R03

3-WAY ADAPTER

This 16A three-way adapter from ASLO offers a convenient solution, allowing multiple devices to be powered simultaneously. Its versatility, combined with its robustness and IP44 protection, make it a practical choice for use in a variety of environments.



3F + 1M

Technical data

Rated current	16A
Number of poles	2P+E
Rated voltage	230V
IP code	IP44
Product weight	0,38 kg
Product dimensions	154 x 124 x 50 mm
Weight with box (6 pcs.)	2,66 kg
Box dimensions	345 x 145 x 163 mm
Pieces per box	6
Barcode	5604612732288

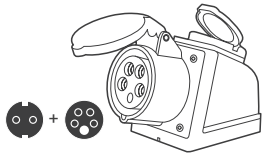


ASTI125112R

WALL MOUNTED SOCKET COMBO

ASLO's female wall socket combo 32A 3P+E (ASTI125112R), suitable for wall mounting, provides a safe and efficient connection in industrial or commercial environments.

IP44 rated, it is resistant to adverse environmental conditions such as splashing water and dust.



Technical data

Rated current	32A
Number of poles	3P+E+N
Rated voltage	230-400V
Fusível de proteção	10A
IP code	IP44
Product weight	0,53 Kg
Product dimensions	190 x 80 x 140 mm
Weight with box (2 pcs.)	1,18 Kg
Box dimensions	250 x 215 x 120 mm
Pieces per box	2
Barcode	5604612732271



INDUSTRIAL PHASE INVERTER MALE PLUG

ASLO's 16A 3P+E+N and 32A 3P+E+N IP44 industrial male plugs allow the phase to be reversed without having to open the plug, simply by turning the pins using a screwdriver.

With IP44 protection, it is resistant to adverse environmental conditions such as splashing water and dust.



Technical data	ASFI015T	ASFI025T
Cable cross section	16A: 1-2.5mm ²	32A: 2.5-6mm ²
Number of poles	3P+E+N	3P+E+N
Material	PA (Polyamide) - IK08	PA (Polyamide) - IK08
Earth terminal position	6H	6H
IP code	IP44	IP44
Product weight	0,21 Kg	0,24 Kg
Product dimensions	75 x 75 x 131 mm	80 x 80 x 165 mm
Weight with box (10 pcs.)	2,33 Kg	2,57 Kg
Box dimensions	304 x 122 x 145 mm	330 x 180 x 140 mm
Pieces per box	10	10
Barcode	5604612732257	5604612732264



Aslo Electric

**HEAT SHRINKABLE
TUBES**

POWER ON

aslo.pt

THIN WALL HEAT SHRINKABLE TUBE WITHOUT ADHESIVE

ASLO offers a wide range of coloured heat shrink tubes. These are perfect for colour coding different cables or conductors.

Material:

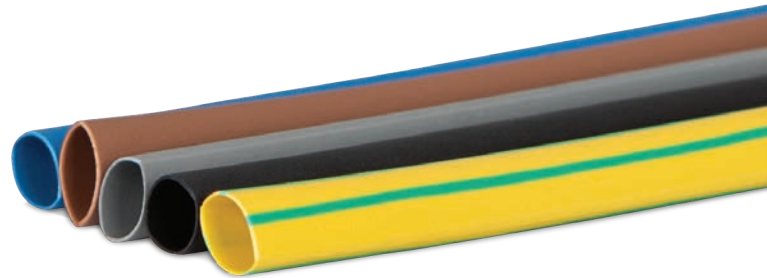
Radiation cross-linked polyolefin tube, strong and flexible, with good resistance to solvents and fluids in general, and high dielectric strength.

Application:

Protection and insulation of connectors, busbars and wiring harnesses.

Features:

- > Flexible;
- > Flame retardant;
- > Continuous operating temperature: -55°C ~ 125°C;
- > Total shrinkage temperature: ≥125°C.



Reference	Colour	Ø (mm)	📦	Ean
ASTTPFSR2AZ	Blue	2,0/1,0	100	5604612735098
ASTTPFSR2CT	Brown			5604612735111
ASTTPFSR2CZ	Grey			5604612735128
ASTTPFSR2PR	Black			5604612735104
ASTTPFSR2VA	Green/Yellow			5604612735135
ASTTPFSR3AZ	Blue	3,0/1,5	100	5604612735142
ASTTPFSR3CT	Brown			5604612735159
ASTTPFSR3CZ	Grey			5604612735166
ASTTPFSR3PR	Black			5604612735173
ASTTPFSR3VA	Green/Yellow			5604612735180
ASTTPFSR4AZ	Blue	4,5/2,3	100	5604612735197
ASTTPFSR4CT	Brown			5604612735203
ASTTPFSR4CZ	Grey			5604612735210
ASTTPFSR4PR	Black			5604612735227
ASTTPFSR4VA	Green/Yellow			5604612735234
ASTTPFSR6AZ	Blue	6,0/3,0	50	5604612735241
ASTTPFSR6CT	Brown			5604612735258
ASTTPFSR6CZ	Grey			5604612735265
ASTTPFSR6PR	Black			5604612735272
ASTTPFSR6VA	Green/Yellow			5604612735296
ASTTPFSR8AZ	Blue	8,0/4,0	50	5604612735302
ASTTPFSR8CT	Brown			5604612735319
ASTTPFSR8CZ	Grey			5604612735326
ASTTPFSR8PR	Black			5604612735333
ASTTPFSR8VA	Green/Yellow			5604612735340

Reference	Colour	Ø (mm)	📦	Ean
ASTTPFSR13AZ	Blue	13,0/6,5	50	5604612735395
ASTTPFSR13CT	Brown			5604612735418
ASTTPFSR13CZ	Grey			5604612735425
ASTTPFSR13PR	Black			5604612735432
ASTTPFSR13VA	Green/Yellow			5604612735449
ASTTPFSR18AZ	Blue	18,0/9,0	25	5604612735456
ASTTPFSR18CT	Brown			5604612735463
ASTTPFSR18CZ	Grey			5604612735470
ASTTPFSR18PR	Black			5604612735487
ASTTPFSR18VA	Green/Yellow			5604612735494
ASTTPFSR25AZ	Blue	25,0/12,5	25	5604612735500
ASTTPFSR25CT	Brown			5604612735517
ASTTPFSR25CZ	Grey			5604612735531
ASTTPFSR25PR	Black			5604612735548
ASTTPFSR25VA	Green/Yellow			5604612735555
ASTTPFSR40AZ	Blue	40,0/20,0	10	5604612735609
ASTTPFSR40CT	Brown			5604612735616
ASTTPFSR40CZ	Grey			5604612735623
ASTTPFSR40PR	Black			5604612735630
ASTTPFSR40VA	Green/Yellow			5604612735647
ASTTPFSR50AZ	Blue	50,0/25,0	10	5604612735654
ASTTPFSR50CT	Brown			5604612735661
ASTTPFSR50CZ	Grey			5604612735678
ASTTPFSR50PR	Black			5604612735685
ASTTPFSR50VA	Green/Yellow			5604612735692

Diameter	Original state	After Shrinkage		Packaging			
		Inner Diameter Before Shrinkage (mm)	Inner diameter (mm)	Wall thickness (mm)	m/bag	m/box	Dimensions (mm)
2.0	2.5±0.2	1.00	0.35	100	2500	200 x 1050 x 160	
3.0	3.5±0.2	1.50	0.40	100	1500		5,7
4.5	5.0±0.2	2.30	0.50	100	800		6,5
6.0	6.5±0.2	3.00	0.55	50	500		4,7
8.0	8.5±0.3	4.00	0.60	50	800		12,6
13.0	13.5±0.3	6.50	0.65	50	600		12,1
18.0	19.0±0.5	9.00	0.80	25	500		17,1
25.0	26.0±0.5	12.5	0.90	25	300		12,5
40.0	41.5±1.0	20.0	0.95	10	200		9,5
50.0	≥50.0	25.0	1.00	10	150		11,9

MEDIUM WALL HEAT SHRINKABLE TUBE WITH ADHESIVE

The heat-shrinkable tube with adhesive has a flexible inner layer of flexible adhesive perfect for sealing the outer tube and the cable insulation against any water penetration. The has a cross-linked outer wall (polyolefin) and an internal layer of adhesive. Once heated, the inner adhesive wall melts and flows. This process creates a layer of bonding that ensures a perfect fit to the cable, wire or connector. It is ideal for produce a weather-resistant seal with additional mechanical and excellent corrosion protection.




Application:

Protection or reinforcement of conductor insulation. Can be placed over the conductor or cable. Insulation with strong compression against humidity.

Used to protect and insulate cables and connectors.

Features:

- > 3:1 shrinkage ratio, non-flame retardant;
- > Seals and protects cable splices and terminations;
- > Robust mechanical protection;
- > Complete sealing against moisture;
- > Strain relief for delicate wiring;
- > High impact and abrasion resistance;
- > Thermoplastic adhesive lining for complete environmental protection and insulation;
- > Continuous operating temperature: -45°C-125°C;
- > Total shrinkage temperature: 125°C.

Reference		Ean
ASTTPMR8PR	50	5604612735708
ASTTPMR12PR	30	5604612735715
ASTTPMR16PR	50	5604612735722
ASTTPMR25PR	85	5604612735739
ASTTPMR33PR	50	5604612735746
ASTTPMR43PR	35	5604612735753
ASTTPMR56PR	25	5604612735760
ASTTPMR65PR	25	5604612735777
ASTTPMR75PR	25	5604612735784
ASTTPMR95PR	20	5604612735791
ASTTPMR115PR	20	5604612735807
ASTTPMR140PR	15	5604612735814

Diameter mm	Expanded Inner Diam. Before Minimum Shrinkage (mm)	After Shrinkage				Packaging			
		Inner Diameter After Maximum Shrinkage (mm)	Wall thickness (mm)	Adhesive thickness (mm)	Wall total thickness (mm)	m/bag	m/box	Dimensions (mm)	Weight per packaging (kg)
8.0/2.0	8.0	2.0	1.40±0.20	0.45±0.15	1.85±0.30	50	300	205 x 1100 x 160	8,3
12.0/3.0	12.0	3.0	1.40±0.20	0.50±0.15	1.90±0.30	30	150	205 x 1100 x 160	7,9
16.0/5.0	16.0	5.0	1.50±0.20	0.55±0.20	2.15±0.35	50	200	300 x 1100 x 250	11,8
25.0/8.0	25.0	8.0	2.00±0.30	0.65±0.20	2.70±0.40	85	85		9,8
33.0/8.0	33.0	8.0	2.50±0.30	0.80±0.25	3.30±0.45	50	50		10,5
43.2/12.7	43.2	12.7	2.40±0.30	0.80±0.25	3.30±0.45	35	35		10,6
55.0/16.0	55.0	16.0	2.40±0.30	0.80±0.25	3.30±0.45	25	25		8,3
65.0/19.0	65.0	19.0	2.50±0.30	0.80±0.25	3.30±0.45	25	25		9,9
75.0/22.0	75.0	22.0	2.90±0.30	0.80±0.25	3.70±0.50	25	25		10,7
95.0/30.0	95.0	30.0	3.00±0.30	0.80±0.25	3.70±0.50	20	20		12,3
115.0/34.0	115.0	34.0	3.00±0.30	0.80±0.25	3.70±0.50	20	20		13,4
140.0/42.0	140.0	42.0	3.00±0.30	0.80±0.25	3.70±0.50	15	15		14,9

HEAT SHRINKABLE CABLE JOINT

22/6-6/3 4x1,5-4mm²




Reference		Ean
ASUT22663	1	5604612735937

HEAT SHRINKABLE END CAP

Made from polyolefin, used to insulate the ends of power and telecommunications cables. Used to seal cable ends during installation or storage, protecting them against oxidation, ozone, UV rays, etc. Coated with hot-melt adhesive to ensure a reliable cable seal.




Reference		Ean
ASCTR16	1	5604612735821
ASCTR20	1	5604612735838
ASCTR25	1	5604612735845
ASCTR30	1	5604612735852
ASCTR40	1	5604612735869
ASCTR55	1	5604612735876

Reference	Original state (mm)			After shrinkage		Applicable cable – Cable outer diameter	Packaging			
	Inner diameter before shrinkage (mm)	Wall thickness (T) (±20%)	Height (L) (±5)	Max. inner diameter (D)	Wall thickness (T) (±10%)		Sales multiple	Pcs. Per packaging	Dimensions (mm)	Weight (kg)
ASCTR16	16	1.0	70	8.5	2.5	9-14	1	2000	390 x 370 x 620	19,7
ASCTR20	20	1.0	70	8.5	2.5	9-17		1500		14,7
ASCTR25	25	1.0	80	11	2.5	12-22		1500		19,4
ASCTR30	30	1.3	95	16	2.8	15-25		800		17,2
ASCTR40	40	1.1	95	18	2.6	20-35		600		13,9
ASCTR55	55	1.0	125	26	2.7	28-45		300		12,8

HEAT SHRINKABLE CALBE BREAKOUT

Made from cross-linked polyolefin and coated with adhesive on the body and fingers to form a watertight seal, for sealing cable ends and protecting them against moisture. High waterproofing capacity, electrical insulation and mechanical resistance for 2 and 4 core cables. Shrinking temperature: starts at 90°C and fully recovers at 130°C.



Reference		Ean
ASETR22413	1	5604612735883
ASETR43818	1	5604612735890
ASETR45025	1	5604612735906
ASETR47032	1	5604612735913
ASETR48245	1	5604612735920

Reference	Cores	Cross-section (mm²)	Original state (mm)				Depois da Retração		Embalagem			
			BODY Inner Diam. Before Minimum Shrinkage (mm)	FINGER Inner Diam. Before Minimum Shrinkage (mm)	Total length (L)(±5)	Finger length	BODY maximum diameter	FINGER maximum diameter	Sales multiple	Pcs. Per packaging	Dimensions (mm)	Weight (kg)
ASETR22413	2	4-16	24	12	130	(L)(±5)	13	5	1	1100	690 x 370 x 620	26,8
ASETR43818	4	4-16	38	10	125	45	18	5		600		15,2
ASETR45025		25-50	50	16	135	45	25	7		450		20,7
ASETR47032		70-120	70	23	180	65	32	9		200		19
ASETR48245		150-240	82	30	210	75	45	13		120		120

Aslo

BRIGHTER LIFE



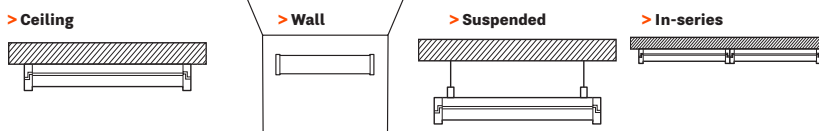
ASLO's new "OL3" indoor luminaire offers excellent light quality and high energy efficiency.

The colour temperature and power selectors give the luminaire great versatility of use. It allows you to switch between three colour temperatures (3000K/4000K/6000K) and optimises energy savings by varying the luminous flux thanks to the 3 positions of the built-in DIP switch.

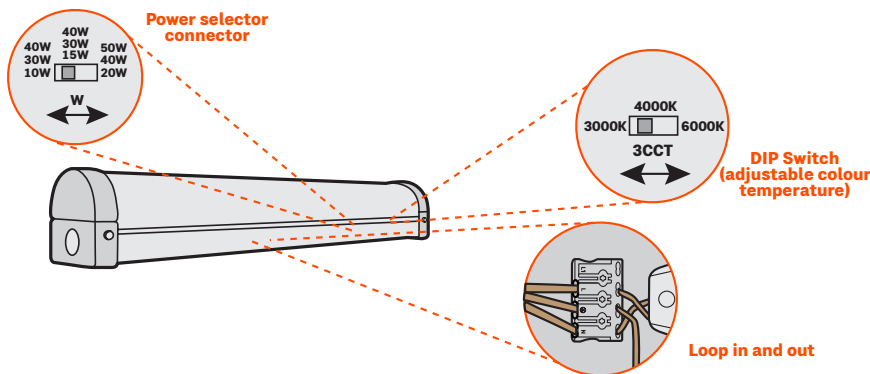
Dealers and installers minimise stock risks by always having a luminaire with the desired colour temperature and power available.

With an elegant and discreet design, its narrow tops allow several luminaires to be connected in series with uniform, shadow-free light.

Installation modes



Product diagram



Main features:

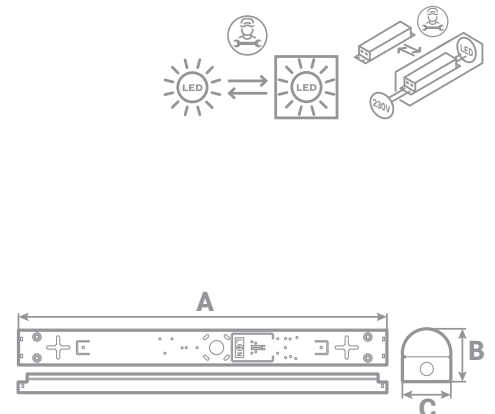
- > Adjustable colour temperature: 3000K, 4000K and 6000K.
- Built-in DIP switch on the side of the luminaire;
- > Built-in power selector on the side of the luminaire;
- > Loop in and out connector - makes connection / installation easier;
- > Power input/output at the back or on the ends;
- > LED module side opening - easy to install and handle;
- > Surface or suspended installation;
- > Possibility of in-series connection without spacing;
- > No flickering or glare.

Technical data:

Use:	Indoor
Power:	> 10-15-20W ↔ > 20-30-40W ↔ > 30-40-50W ↔
LED type:	LED SMD 2835
Installation:	Surface-mounted and suspended
Place:	Ceiling / wall
Voltage:	220-240V AC 50-60 Hz
Beam angle:	120°
Adjustable colour temperature:	3000K ↑ 4000K ↔ 6000K ↓
Lifespan:	35.000h
ON/OFF switching cycles:	15.000
Colour rendering index:	CRI>80
Displacement factor:	D.F. 0,9
Insulation class:	III
Energy class:	A D
IP code:	IP20 (Body) IP40 (Light source)
Impact resistance rating:	IK08
Material:	Diffuser: Polycarbonate (PC)
Standards:	RoHS / CE

LED FIXTURE

REF.	W	Useful lumens	AxBxC	Box	Unit	EAN.
ASOL320C3	10-15-20W	2700Lm ^{360°}	570x70x65mm	1	6	5604612729066
ASOL340C3	20-30-40W	5400Lm ^{360°}	1170x70x65mm	1	6	5604612729073
ASOL350C3	30-40-50W	6750Lm ^{360°}	1470x70x65mm	1	6	5604612729080



Aslo

BRIGHTER LIFE



4TEC^{SERIES} DIMMABLE LED DOWNLIGHT

Indoor lighting - Recessed
aslo.pt





4TEC SERIES

ASLO's new "4TEC" waterproof recessed downlight allows you to adjust the luminous flux and allows the selection of 5W/8W of power, with an efficiency of over 100lm/W.

It has a colour temperature DIP switch (4-CCT) built-in to the external driver, offering the possibility of choosing the desired colour for each room.

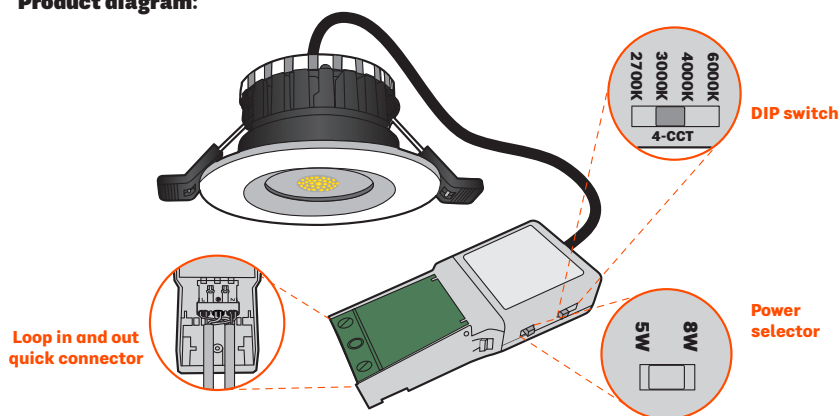
Also noteworthy is the "Flicker-Free" feature for a truly comfortable visual experience.

Due to its IP65 degree of protection and resistance to fire, it has been specially developed for more specific and demanding environments.

Featuring a white finish, the frame can easily be replaced with a Black or Nickel colour, which can be purchased separately.

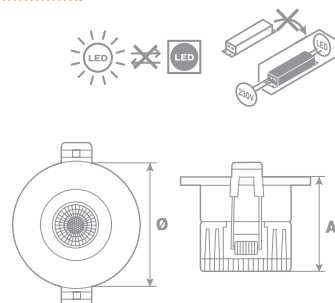
The connection is made via a loop in and out connector which is inside a detachable box, making installation extremely simple and easy, ideal for both domestic and professional use.

Product diagram:



DIMMABLE LED DOWNLIGHT 4CCT

REF.	W	K	Useful Lumens	ØxA			EAN.
AS4TEC58C4BR	5W 8W	2700K	640LM ^{90°}	90x45 mm	1	24	5604612728960
		3000K					
		4000K					
		6000K					



Main features:

- > Adjustable colour temperature: 2700K/3000K/4000K and 6000K. Built-in DIP switch on the driver;
- > Adjustable power: 5W/8W - Built-in selector on the driver;
- > Loop-in and out connector - makes connection / installation easier;
- > TRIAC dimmable, allows control of projected light intensity;
- > No flickering or glare;
- > 30 / 60 / 90 minute fire test.

Technical data:

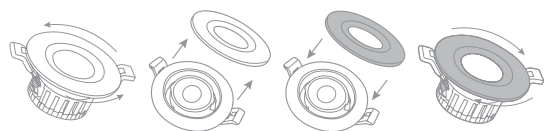
Use:	Indoor
LED type:	LED SMD 2835
Power:	5W ↑ 8W ↓
Lumens:	475~550 Lm (5W) 690~820 Lm (8W)
Installation:	Recessed
Place:	Ceiling
Voltage:	200-240V AC 50-60 Hz
Beam angle:	38°
Adjustable colour temperature:	2700K ↑ 3000K 4000K 6000K ↓
TRIAC dimmable:	Sim
Lifespan:	54.000h
ON/OFF switching cycles:	15.000
Colour rendering index:	CRI>80
Insulation class:	
Energy class:	
IP code:	IP20 (Frame) IP65 (Front)
Material:	Body: Aluminium + iron Diffuser: Polycarbonate
Operating temperature:	-20°C-45°C
Packaging dimensions:	100x100x85mm
Standards:	RoHS / CE

To ensure a better experience with the 4TEC series, ASLO has at your disposal accessories that must be purchased separately from the dimmable LED downlight.

RING FOR DIMMABLE DOWNLIGHT LED 4TEC



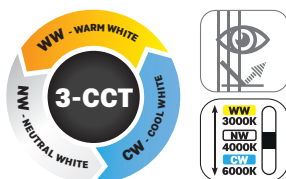
REF.	COLOR		EAN.
ASAP4TECNS		1	5604612728984
ASAP4TECPR			5604612728977



Aslo

BRIGHTER LIFE

GU10 DIMMABLE LED LAMP



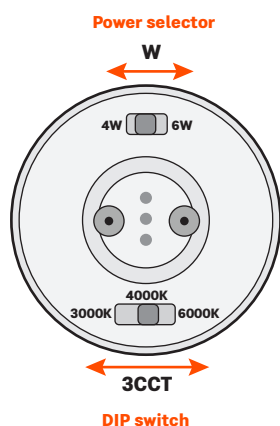
Main features:

- > Adjustable CCT (3000K/4000K/6000K) with built-in DIP switch;
- > Power selector;
- > Possibility of being used with any recessed or surface-mounted downlight, instead of a conventional GU10 LED bulb, thus creating an ambience to your liking in any situation by simply adjusting the colour temperature or power selector;
- > TRIAC dimmable, allows you to control the intensity of the light intensity;
- > No flickering and glare.

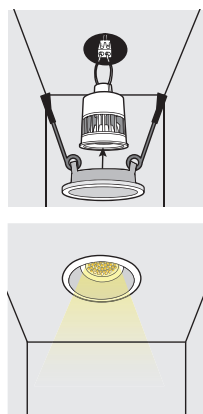
Technical data:

Use:	Indoor
LED type:	LED SMD 2835
Power:	4W ↑ 6W ↓
Lumens:	436~475 Lm (4W) 554~627 Lm (6W)
Installation:	Recessed
Voltage:	200-240V AC 50-60 Hz
Beam angle:	60°
Adjustable colour temperature:	3000K ↑ 4000K ↔ 6000K ↓
Lifespan:	54.000h
ON/OFF switching cycles:	15.000
Colour rendering index:	CRI>80
Displacement factor:	D.F. 0,8 (4W) D.F. 0,85 (6W)
Energy class:	A G F
TRIAC dimmable:	Yes
IP code:	IP40
Material:	Aluminium Diffuser: Polycarbonate
Operating temperature:	-20°C-45°C
Packaging dimensions:	50x50x65mm
Standards:	RoHS / CE

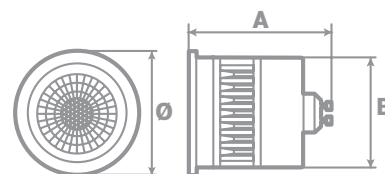
Product diagram



Installation diagram



REF.	W	Useful Lumens	ØxAxB			EAN.	PT.
ASLED100406C3	4W 6W	470Lm ^{90°}	50x56x44mm	1	10	5604612728922	11,80€



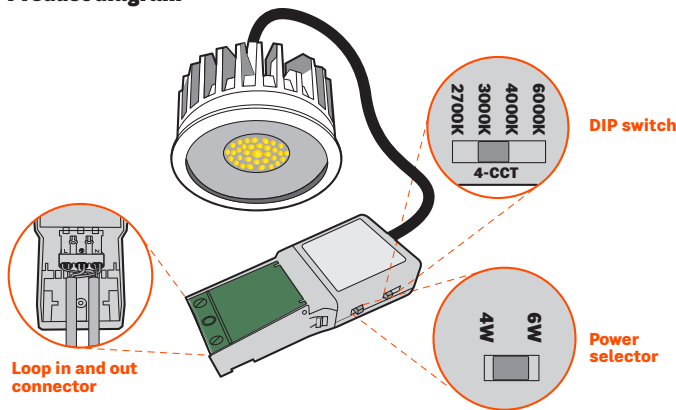
Aslo

BRIGHTER LIFE

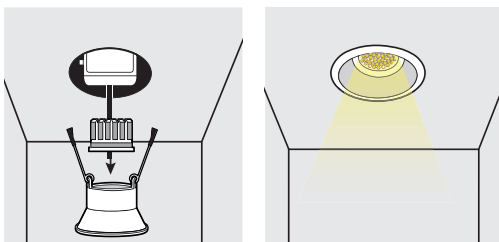
DIMMABLE LED MODULE



Product diagram



Installation diagram



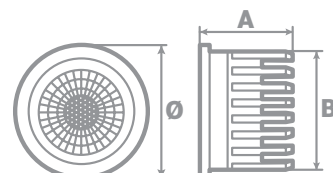
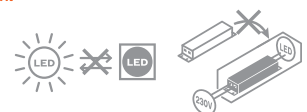
REF.	W	Useful Lumens	ØxAxB			EAN.
ASML0406C4	4W ↑ 6W ↓	520Lm ^{90°}	50x30x46 mm	1	10	5604612728953

Main features:

- > Slim and compact design, ideal for shallow ceilings;
- > Adjustable CCT (2700K / 3000K / 4000K / 6000K) with built-in DIP switch on the driver;
- > Built-in power selector on the driver (4W/6W);
- > Possibility of being used with any recessed or surface-mounted downlights, instead of a conventional GU10 led bulb, thus creating an ambience to your liking in any situation by simply adjusting the colour temperature or power selector;
- > TRIAC dimmable, allows you to control the intensity of the intensity;
- > No flickering and glare.

Technical data:

Use:	Indoor
LED type:	LED SMD 2835
Power:	4W ↑ 6W ↓
Lumens:	450~500 Lm (4W) 550~680 Lm (6W)
Installation:	Recessed
Voltage:	200-240V AC 50-60 Hz
Beam angle:	38°
Adjustable colour temperature:	2700K ↑ 3000K 4000K 6000K ↓
Lifespan:	54.000h
ON/OFF switching cycles:	15.000
Colour rendering index:	CRI>80
Displacement factor:	D.F. 0,8 (4W) D.F. 0,85 (6W)
Energy class:	
TRIAC dimmable:	Yes
IP code:	IP40
Material:	Aluminium Diffuser: Polycarbonate
Operating temperature:	-20°C-45°C
Dimensions of packaging:	85x85x57mm
Insulation class:	
Standards:	RoHS / CE



Aslo

BRIGHTER LIFE



SOLLUZ SERIES

LED SOLAR FLOODLIGHT WITH REMOTE CONTROL

150-160Lm/W
SOLAR LIGHTING





10W



30W

Main features:

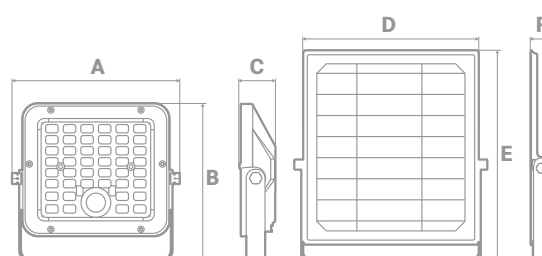
- > Super bright - 150-160 Lm/W = much larger lighting area;
- > Modern, new and simple design;
- > 2 operating modes: automatic sensor mode and continuous lighting mode;
- > The lenses (optical) make the emitted light uniform and comfortable;
- > The wall bracket is 360° adjustable to easily set the desired lighting direction and area;
- > Includes remote control with brightness adjustment, continuous lighting mode and automatic sensor;
- > IP65 waterproof.

Technical data:

Power:	10W	30W	Power:	10W	30W
Solar panel:	Monocrystalline silicon 4,5W, 5,5V	Monocrystalline silicon 12,5W, 10V	Luminous projection range:	60~80 m ²	100~150 m ²
Beam angle:	120°x60°		Adjustable angle of the floodlight:	360°	
Charging time:	4-6h insolation to full charge		LED type:	SMD 2835 44un.	SMD 2835 90un.
Motion detector:	120°/6m	120°/8m	Lumens:	1500Lm	4800Lm
Colour temperature:	6000K		Floodlight dimensions:	152,7(A) x143,8(B) x32,3(C)mm	199,7 (A) x189,9 (B) x49(C)mm
Product material:	ABS+PC, aluminium, UV-resistant and fireproof		Solar panel dimensions:	202,1(D) x220,9(E) x24(F)mm	354 (D) x254,2(E) x38,3(F)mm
Battery:	LiFPo4 18650 Li-ion, 3.7V, 3600mAh, 13,32Wh, replaceable	LiFePo4 32700 Li-ion, 6.4V, 6000mAh, 38,4Wh, replaceable	IP code:	IP65	
Installation distance:	8~10m	10~14m	Operating temperature:	-20°C~50°C	-20°C~60°C
Installation height:	2~4m	2~5m	Storage temperature:	0°C~45°C	
Adjustable solar panel:	170°		Floodlight weight:	0,91kg	1,62kg
Solar panel cable length:	5m with waterproof connector IP67		Weight with packaging:	0,96kg	2,06kg
Lighting time:	up to 60 hours		Standards:	CE, RoHs and Reach	

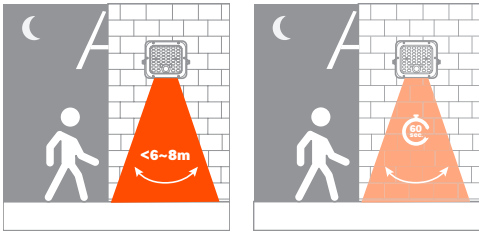
LED SOLAR FLOODLIGHT WITH REMOTE CONTROL

REF.	W	Lm			EAN.
ASSOL1060	10	1500	1	12	5604612728908
ASSOL3060	30	4800	1	8	5604612728915



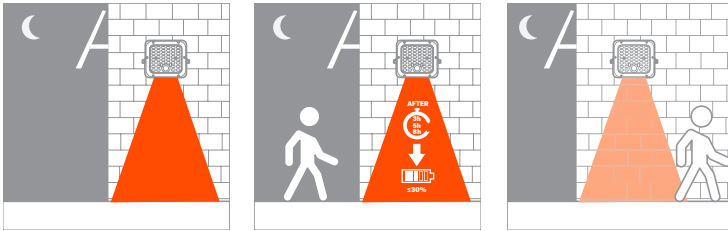
OPERATION MODES:

> AUTOMATIC SENSOR MODE



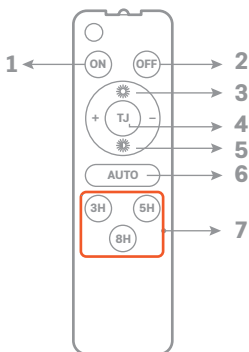
> The floodlight switches on automatically at night and reaches full brightness when motion is detected at a range <6m (10W)- 8m (30W) and then reduces brightness in 60seconds without motion.

> CONTINUOUS LIGHTING MODE



> The floodlight switches on automatically at night and maintains the selected brightness for 3H, 5H and 8H, after which, or when the battery power is less than 30%, the floodlight switches to automatic sensor mode.

REMOTE CONTROL



- 1 - Switch on button
- 2 - Switch off button
- 3 - 60% brightness
- 4 - No function button
- 5 - 30% brightness
- 6 - Floodlight directly activates auto sensor mode
- 7 - Floodlight activates continuous illumination mode

APPLICATION / USE

> Walls, garden, square, farm, motorhomes, patio, car park, balcony, villa, zoo, boat, pavilion, alley, warehouse, bus station, among others.

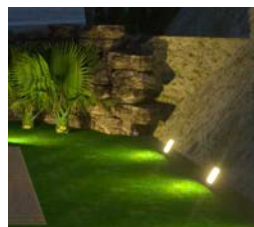
5 INSTALLATION METHODS



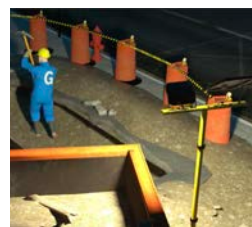
> Wall mounted



> Ceiling installation



> Floor installation



> Portable work light



> Pole installation



Solar LED light

Power:	10W	30W
Lumens:	1500Lm	4800Lm
Lumens/W:	150Lm/W	160Lm/W
Colour temperature:	6000K	6000K
LED type:	SMD 2835 - 44un.	SMD 2835 - 90un.
Beam angle:	60°x120°	60°x120°
Colour rendering index:	CRI80	CRI80
Mechanical impact resistance rating:	IK08	IK08
IP code:	IP65	IP65
Operating temperature:	-20°-+50°C	-20°-+60°C
Material:	ABS+PC ANTI UV	ABS+PC ANTI UV
Protection against fire:	FIRE-PROOF VO	FIRE-PROOF VO
Packaging dimensions:	560x50x245mm	382x70x260mm
Weight with packaging:	0,96kg	2,06kg

Solar panel

Power/voltage:	4,5W / 5,5V	12,5W / 10V
Material:	Monocrystalline silicon	Monocrystalline silicon
Cable length:	5m	5m
Dimensions:	202,1x220,9x24mm	354x254,2x38,3mm

Sensor

Detection distance:	6m	8m
Installation height:	2~4m	2~5m
Detection angle:	120°	120°

Battery

Lithium-ion:	Li-ion 18650	LifeP04-32700
Supply voltage:	3600mAh - 3,7V	6000mAh - 6,4V
Charging time:	4~6h	4~6h
Run time:	until 60h	until 60h
No. Of cycles:	1000x	2000x

Remote control

Lighting control:	Yes	Yes
Continuous lighting mode:	Yes	Yes
Automatic sensor mode:	Yes	Yes

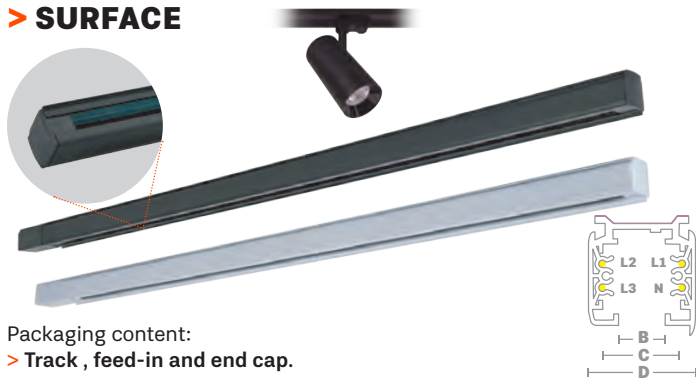
Packaging content

1 Solar projector
1 Solar panel
1 Remote control (battery included - 2xAAA LR03)
1 User manual
4 Wall plugs + Screws

ACCESSORIES FOR TRACK LIGHTS

Three-phase track for installation of ASLO's LIVING and LOUNGE series luminaires. Possibility of connecting several track lights on the same rail, allowing the control of 3 independent lighting circuits. Available in surface / suspended and recessed versions and in white and black colours, it already includes the feed-in and end cap. Several connection accessories available.

> SURFACE



Packaging content:
> Track , feed-in and end cap.

3-CIRCUIT SURFACE MOUNTED TRACK*

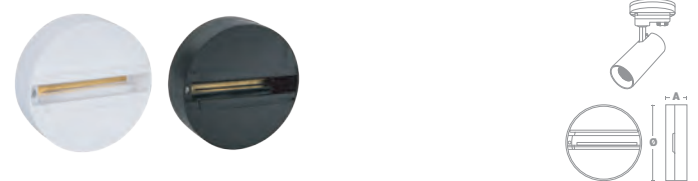
REF.	COLOUR	AxBxCxD	m		EAN.
ASCS3C2BR	○	32,6x14,5 x22x32,2 mm	2	1	5604612723606
ASCS3C2PR	●				5604612723637
ASCS3C3BR	○	3	1		5604612723613
ASCS3C3PR	●			5604612723620	

* Track light no inclus.



FEED-IN FOR 3-CIRCUIT SURFACE MOUNTED TRACK

REF.	COLOUR	AxBxC		EAN.
ASACS3CBR	○	32x25,5 x98,5 mm	1	5604612723682
ASACS3CPR	●	32x25,5 x98,5 mm	1	5604612723699



ROUND BASE FOR 3-CIRCUIT SURFACE MOUNTED TRACK LIGHT

REF.	COLOUR	AxØ		EAN.
ASBCS3CBR	○	32x100 mm	1	5604612723743
ASBCS3CPR	●	32x100 mm	1	5604612723750



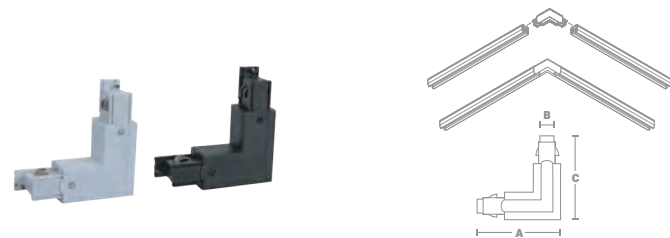
SUSPENSION KIT FOR SURFACE MOUNTED TRACK

REF.	COLOUR	AxBxCxD	m		EAN.
ASCSCSBR	○	33x15 x70x55 mm	2	1	5604612723729
ASCSCSPR	●				5604612723736



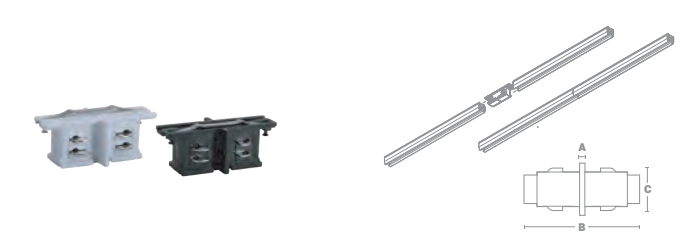
END CAP FOR 3-CIRCUIT SURFACE MOUNTED TRACK

REF.	COLOUR	AxBxC		EAN.
ASTFCS3CBR	○	31x33 x31 mm	1	5604612723705
ASTFCS3CPR	●	31x33 x31 mm	1	5604612723712



L-TYPE CONNECTOR FOR 3-CIRCUIT SURFACE MOUNTED TRACK

REF.	COLOUR	AxBxC		EAN.
ASUACS3CBR	○	98,5x25,5 x98,5 mm	1	5604612723668
ASUACS3CPR	●	98,5x25,5 x98,5 mm	1	5604612723675



CONNECTOR FOR 3-CIRCUIT SURFACE MOUNTED TRACK

REF.	COLOUR	AxBxC		EAN.
ASUCS3CBR	○	3x69,5 x25,5 mm	1	5604612723644
ASUCS3CPR	●	3x69,5 x25,5 mm	1	5604612723651

> RECESSED



Packaging content:
 > Track , feed-in and end cap.

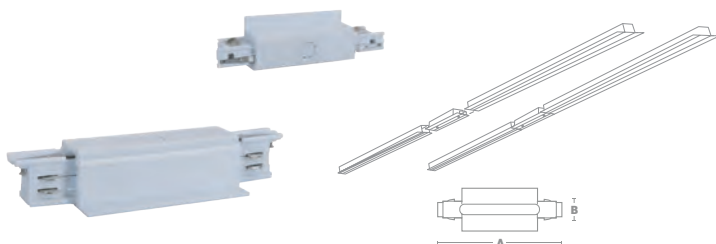
3-CIRCUIT RECESSED TRACK*

REF.	COLOUR	AxBxCxDxE	m		EAN.
ASCE3C2BR	○	32,4x32,6 x14,5x22	2	1	5604612723767
ASCE3C3BR	○	x55,7mm	3		5604612723774

* Track light no inclus.

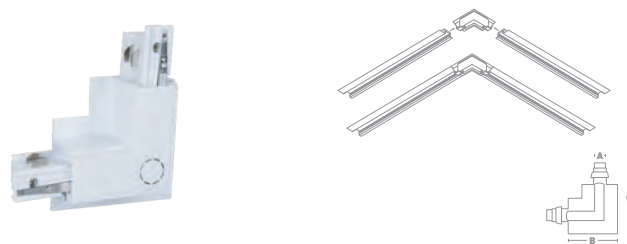
FEED-IN FOR 3-CIRCUIT RECESSED TRACK

REF.	COLOUR	AxBxCxD		EAN.
ASACE3CBR	○	25,5x66 x98x56mm	1	5604612723804



END CAP FOR 3-CIRCUIT RECESSED TRACK

REF.	COLOUR	AxBxC		EAN.
ASTFCE3CBR	○	31x33 x31mm	1	5604612723811



CONNECTOR FOR 3-CIRCUIT RECESSED TRACK

REF.	COLOUR	AxB		EAN.
ASUCE3CBR	○	16,5x25,5 mm	1	5604612723781



L-TYPE CONNECTOR FOR 3-CIRCUIT RECESSED TRACK

REF.	COLOUR	AxBxC		EAN.
ASUACE3CBR	○	25,5x77,7 x110,8mm	1	5604612723798



These accessories are a great complement to ASLO's new ranges of 3-circuit track lights: "LIVING" Series and "LOUNGE" Series.



Aslo

BRIGHTER LIFE



SOLLUZ SERIES

LED SOLAR FLOODLIGHT WITH REMOTE CONTROL

150-160Lm/W
SOLAR LIGHTING





10W



30W

Main features:

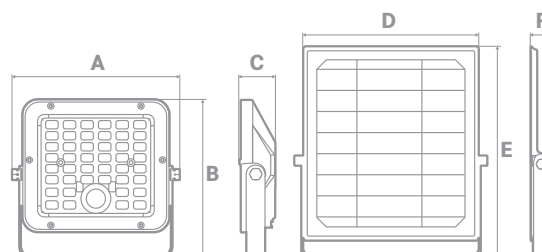
- > Super bright - 150-160 Lm/W = much larger lighting area;
- > Modern, new and simple design;
- > 2 operating modes: automatic sensor mode and continuous lighting mode;
- > The lenses (optical) make the emitted light uniform and comfortable;
- > The wall bracket is 360° adjustable to easily set the desired lighting direction and area;
- > Includes remote control with brightness adjustment, continuous lighting mode and automatic sensor;
- > IP65 waterproof.

Technical data:

Power:	10W	30W	Power:	10W	30W
Solar panel:	Monocrystalline silicon 4,5W, 5,5V	Monocrystalline silicon 12,5W, 10V	Luminous projection range:	60~80 m ²	100~150 m ²
Beam angle:	120°x60°		Adjustable angle of the floodlight:	360°	
Charging time:	4-6h insolation to full charge		LED type:	SMD 2835 44un.	SMD 2835 90un.
Motion detector:	120°/6m	120°/8m	Lumens:	1500Lm	4800Lm
Colour temperature:	6000K		Floodlight dimensions:	152,7(A) x143,8(B) x32,3(C)mm	199,7 (A) x189,9 (B) x49(C)mm
Product material:	ABS+PC, aluminium, UV-resistant and fireproof		Solar panel dimensions:	202,1(D) x220,9(E) x24(F)mm	354 (D) x254,2(E) x38,3(F)mm
Battery:	LiFPo4 18650 Li-ion, 3.7V, 3600mAh, 13,32Wh, replaceable	LiFePo4 32700 Li-ion, 6.4V, 6000mAh, 38,4Wh, replaceable	IP code:	IP65	
Installation distance:	8~10m	10~14m	Operating temperature:	-20°C~50°C	-20°C~60°C
Installation height:	2~4m	2~5m	Storage temperature:	0°C~45°C	
Adjustable solar panel:	170°		Floodlight weight:	0,91kg	1,62kg
Solar panel cable length:	5m with waterproof connector IP67		Weight with packaging:	0,96kg	2,06kg
Lighting time:	up to 60 hours		Standards:	CE, RoHs and Reach	

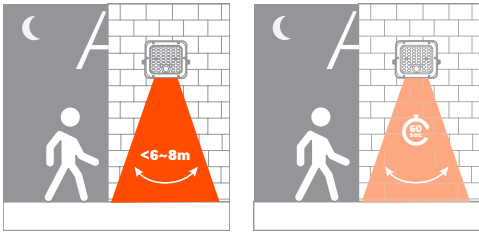
LED SOLAR FLOODLIGHT WITH REMOTE CONTROL

REF.	W	Lm			EAN.
ASSOL1060	10	1500	1	12	5604612728908
ASSOL3060	30	4800	1	8	5604612728915



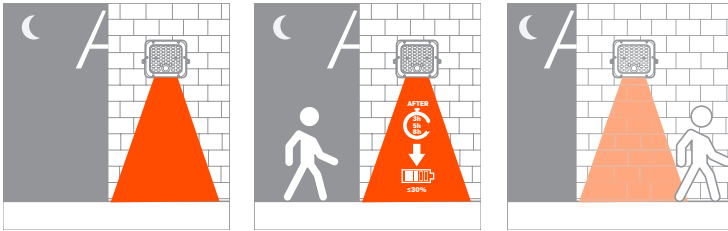
OPERATION MODES:

> AUTOMATIC SENSOR MODE



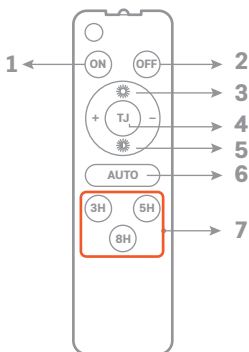
> The floodlight switches on automatically at night and reaches full brightness when motion is detected at a range <6m (10W)- 8m (30W) and then reduces brightness in 60seconds without motion.

> CONTINUOUS LIGHTING MODE



> The floodlight switches on automatically at night and maintains the selected brightness for 3H, 5H and 8H, after which, or when the battery power is less than 30%, the floodlight switches to automatic sensor mode.

REMOTE CONTROL



- 1 - Switch on button
- 2 - Switch off button
- 3 - 60% brightness
- 4 - No function button
- 5 - 30% brightness
- 6 - Floodlight directly activates auto sensor mode
- 7 - Floodlight activates continuous illumination mode

APPLICATION / USE

> Walls, garden, square, farm, motorhomes, patio, car park, balcony, villa, zoo, boat, pavilion, alley, warehouse, bus station, among others.

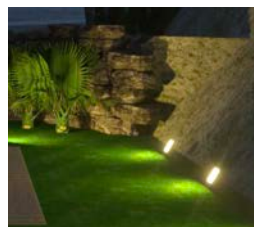
5 INSTALLATION METHODS



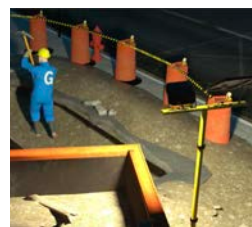
> Wall mounted



> Ceiling installation



> Floor installation



> Portable work light



> Pole installation



Solar LED light

Power:	10W	30W
Lumens:	1500Lm	4800Lm
Lumens/W:	150Lm/W	160Lm/W
Colour temperature:	6000K	6000K
LED type:	SMD 2835 - 44un.	SMD 2835 - 90un.
Beam angle:	60°x120°	60°x120°
Colour rendering index:	CRI80	CRI80
Mechanical impact resistance rating:	IK08	IK08
IP code:	IP65	IP65
Operating temperature:	-20°-+50°C	-20°-+60°C
Material:	ABS+PC ANTI UV	ABS+PC ANTI UV
Protection against fire:	FIRE-PROOF VO	FIRE-PROOF VO
Packaging dimensions:	560x50x245mm	382x70x260mm
Weight with packaging:	0,96kg	2,06kg

Solar panel

Power/voltage:	4,5W / 5,5V	12,5W / 10V
Material:	Monocrystalline silicon	Monocrystalline silicon
Cable length:	5m	5m
Dimensions:	202,1x220,9x24mm	354x254,2x38,3mm

Sensor

Detection distance:	6m	8m
Installation height:	2~4m	2~5m
Detection angle:	120°	120°

Battery

Lithium-ion:	Li-ion 18650	LifeP04-32700
Supply voltage:	3600mAh - 3,7V	6000mAh - 6,4V
Charging time:	4~6h	4~6h
Run time:	until 60h	until 60h
No. Of cycles:	1000x	2000x

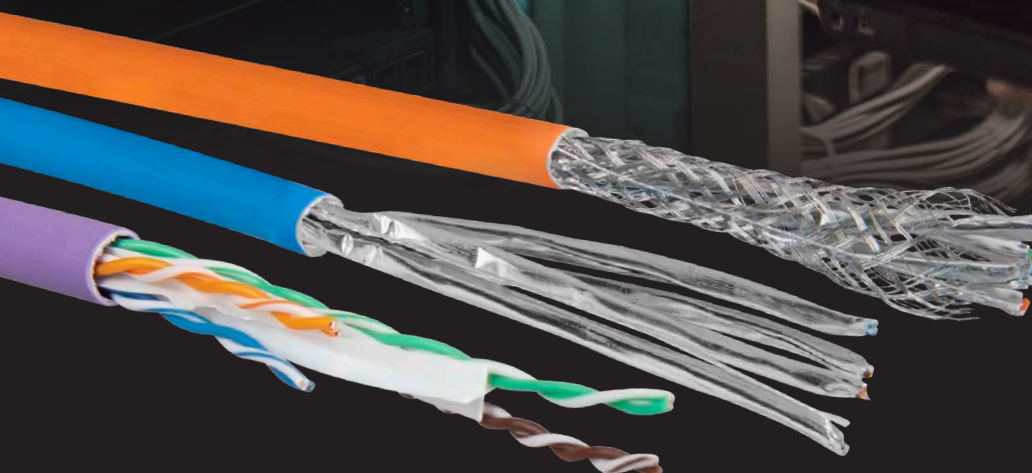
Remote control

Lighting control:	Yes	Yes
Continuous lighting mode:	Yes	Yes
Automatic sensor mode:	Yes	Yes

Packaging content

1 Solar projector
1 Solar panel
1 Remote control (battery included - 2xAAA LR03)
1 User manual
4 Wall plugs + Screws

Aslo Electric



NETWORK CABLES

POWER ON

aslo.pt

ASLO presents a wider range of cables and solutions for copper networks, responding to the needs in terms of transmission speed and efficiency of the different infrastructures. From the latest and fastest data transmission speeds of CAT 7A cables and their 10 GB/s over 100m, to the widely used CAT 6A and CAT 6 cables.

Application:

Cables for use in telecommunications systems, for data transmission, for distribution of TV and radio signals in radio frequency networks, in signalling and control systems, installed in buildings and works subject to fire-reaction requirements.

NEW U/FTP CAT6A CABLE CU LSZH DCA

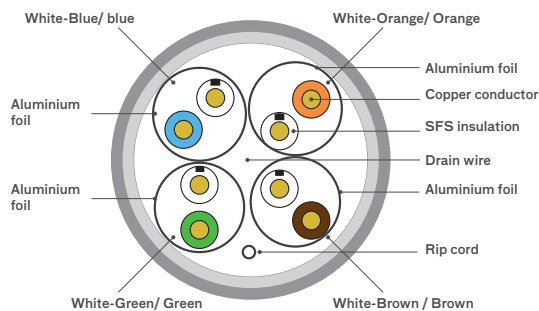


Halogen-free

Cable composition

Conductor - Solid bare copper; $0,56 \pm 0,005$ mm diameter;
Insulation - PE (Polyethylene); $1,30 \pm 0,05$ mm diameter;
Jacket - LSZH, outer diameter: $7,3 \pm 0,3$,
 thickness: $0,55 \pm 0,05$, (Blue).
Shielding of the wire pair - aluminium foil

Cable diagram



Electrical data (20°C)

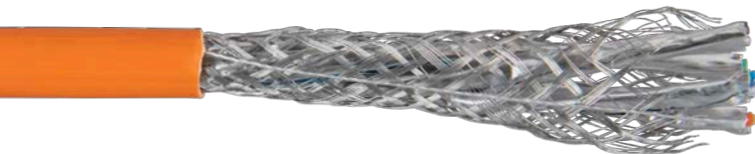
1.0 - 500.0 MHz Impedance (Ω) 100 ± 15
 Conductor resistance (20°) $\leq 7,5 \Omega / 100m$
 Electrical resistance unbalance (20°) $\leq 2.5\%$
 NVP [% light speed] **69%**
 Insulation resistance $> 5000 M\Omega km$
 Capacitance (nF/100m) **5.6 max.**
 Storage Temperature: **0~40°C**
 Operating Temperature: **-20~60°C**

Reaction to fire CPR – Eca

ANSI / TIA-568-C.2+ISO / IEC 11801+IEC 61156+BS
 EN 50288, CE, RoHS

Ref.	Pack.	Dim.	EAN.
 ASCUFTP6A0301	1 Spool	305 m	5604612729202

NEW S/FTP CAT7A CABLE CU LSZH DCA

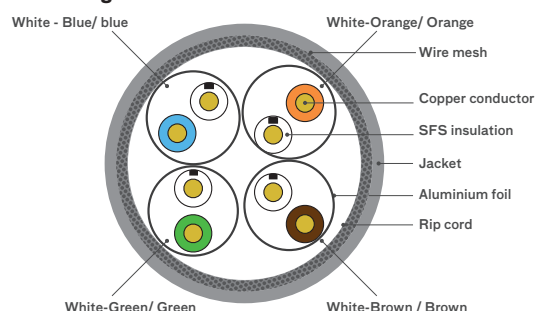


Halogen-free

Cable composition

Conductor - Solid bare copper ; $0,57 \pm 0,005$ mm diameter;
Insulation - PE (Polyethylene); $1,37 \pm 0,05$ mm diameter;
Jacket - LSZH, outer diameter: $8.0 \pm 0,3$,
 $0,55 \pm 0,05$ mm, (orange).
Pair wire shielding - aluminium foil
Total shielding - $96 \times 0,12$ mm braided A1

Cable diagram



Electrical data (20°C)

1.0 - 1000.0 MHz Impedance (Ω) 100 ± 15
 Conductor resistance (20°) $\leq 7,3 \Omega / 100m$
 Electrical resistance unbalance (20°) $\leq 2.5\%$
 NVP [% light speed] **69%**
 Insulation resistance $> 5000 M\Omega km$
 Capacitance (nF/100m) **5.6 max.**
 Storage Temperature: **0~40°C**
 Operating Temperature: **-20~60°C**

Reaction to fire CPR – DCA

ANSI / TIA-568-C.2 + IEC 61156, EN 50173,
 CE, RoHS

Ref.	Pack.	Dim.	EAN.
 ASCSFTP7A0301	1 Spool	305 m	5604612729219

NEW // **U/UTP CAT6 CABLE CU PE JELLY**



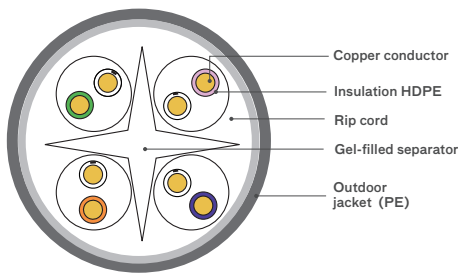
Electrical data (20°C)

1.0 - 250.0 MHz Impedance (Ω) **100 ± 15**
 Conductor resistance (20°) **≤ 8,3 Ω / 100m**
 Electrical resistance unbalance (20°) **≤ 2.5%**
 NVP [% light speed] **69%**
 Insulation resistance **> 5000 M Ω km**
 Capacitance (nF/100m) **5.6 max.**
 Storage Temperature: **0~40°C**
 Operating Temperature: **-20~60°C**

Cable composition

Conductor - Solid bare copper; 0,53 ± 0,005mm diameter;
Insulation - HDPE (High density polyethylene); 0,91 ± 0,05 mm diameter;
Jacket - PE (Polyethylene), outer diameter: 6,1±0,3, thickness: 0,55 ±0,05, (Black).
Note: The jelly helps protect from moisture, improving the cable's performance when used outdoors.

Cable diagram



Reaction to fire CPR – Dca

ANSI / TIA-568-C.2 ISO / IEC 11801 IEC 61156 BS
 EN 50288, CE, RoHS

Ref.	Pack.	Dim.	EAN.
 ASCUTPG0601	1 Spool	305 m	5604612729226

CAT6 U/UTP CABLE CCA PVC Eca



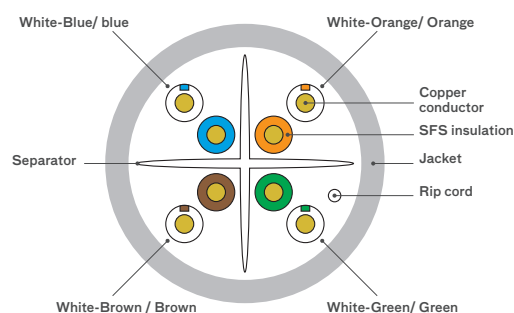
Electrical data (20°C)

1.0 - 250.0 MHz Impedance (Ω) **100 ± 15**
 1.0 - 250.0 MHz Propagation delay (ns/100) **≤ 45**
 NVP [[% light speed] **69%**
 Capacitance (nF/100m) **5.6 max.**
 DC Resistance (Ω /100m) **11.3 max.**
 DC Conductor Resistance unbalance (%) **5.0 max.**

Cable composition


Conductor – Solid CCA; 0,57 ± 0,008 mm diameter.
Insulation – HDPE (High Density Polyethylene); 1,02 ± 0,03 mm diameter.
Jacket – PVC; 6,3 ± 0,4 mm outer diameter;
 0,55 ± 0,05 mm thickness; RAL7047 (Gris).

Cable diagram



Reaction to fire CPR – ECA

EN50173, CE, RoHS

Ref.	Pack	Dim.	EAN.
 ASCUTP0101	2 Boxes	305 m	5604612698522

U/UTP CAT6 CABLE CU PVC Eca



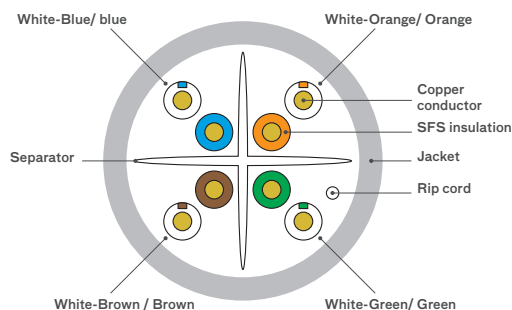
Cable composition

Conductor - Solid CU; 0,55 ± 0,02 mm diameter.

Insulation - HDPE (High Density Polyethylene); 0,96 ± 0,03mm diameter.

Jacket - PVC ; 6,1 ± 0,4 mm outer diameter; 0,55 ± 0,05 mm thickness; RAL7047 (Gris).

Cable diagram



Electrical data (20°C)

1.0 - 250.0 MHz Impedance (Ω) 100 ± 15

1.0 - 250.0 MHz Propagation delay (ns/100) ≤ 45

NVP [% light speed] 69%




Capacitance (nF/100m) 5.6 max.

DC Resistance (Ω /100m) 9.5 max.

DC Conductor Resistance unbalance (%) 2.5 max.

Reaction to fire CPR – Eca

ISO/IEC11801, ANSI/TIA/EIA568-C.2, EN50173, CE, RoHS

Ref.	Pack.	Dim.	EAN.
 ASCUTP0201	2 Boxes	305 m	5604612698546
 ASCUTP0202	1 Spool	500 m	5604612698553
 ASCUTP0203	1 Spool	1000 m	5604612705190

U/UTP CAT6 CABLE CU LSZH Dca



Halogen-free

Cable composition

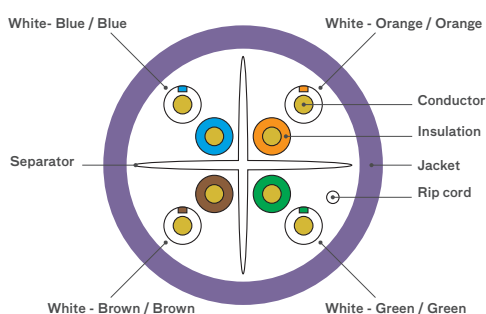
Conductor - Solid CU; 0,55 ± 0,02 mm diameter.

Jacket - HDPE (High Density Polyethylene); 0,96 ± 0,03 mm diameter.

Jacket - LSZH; 6,1 ± 0,4 mm outer diameter;

0,55 ± 0,05 mm thickness; RAL4005 (Violet).

Cable diagram



Electrical data (20°C)

1.0 - 250.0 MHz Impedance (Ω) 100 ± 15

1.0 - 250.0 MHz Propagation delay (ns/100) ≤ 45

NVP [% light speed] 69%




Capacitance (nF/100m) 5.6 max.

DC Resistance (Ω /100m) 9.5 max.

DC Conductor Resistance unbalance (%) 2.5 max.

Reaction to fire CPR – Dca

IEC60332-1-2, IEC60754-1, IEC60134-1-2, ISO/IEC11801, ANSI/TIA/EIA568-C.2, EN50173, CE, RoHS

Ref.	Pack.	Dim.	EAN.
 ASCUTP0301	2 Boxes	305 m	5604612698560
 ASCUTP0302	1 Spool	500 m	5604612698577
 ASCUTP0303	1 Spool	1000 m	5604612705206

Aslo

BRIGHTER LIFE



New aluminium version, more robust, for better heat dissipation. It stands out for its high level of colour rendering index and the possibility of dimming by Triac Dimmer. Designed for use in demanding projects, in residential and commercial spaces, where the need to create points of focus and a uniform luminosity prevails.

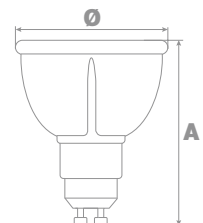


Technical data:

Use:	Indoor
LED Chip:	LED COB
Power:	6,5W
Voltage:	220-240V AC
Beam angle:	36°
Lamp holder:	GU10
Triac Dimmable:	Yes
Lifespan:	30.000h
ON/OFF switching cycles:	15.000
Colour rendering index:	CRI ≥ 90
Displacement factor:	D.F. 0.9
Energy efficiency class:	A G F
Material:	> Body: Aluminum > Lens: Polycarbonate
Standards:	RoHS / CE

GU10 LED LAMP COB DIMMABLE

REF.	W	K	Lm	AxØ	Box	EAN.
ASLED10A6527D		2700	520Lm ^{90°}		10	5604612727550
ASLED10A6540D	6,5	4000	550Lm ^{90°}	55x50mm	10	5604612727567
ASLED10A6560D		6000	600Lm ^{90°}		10	5604612727574

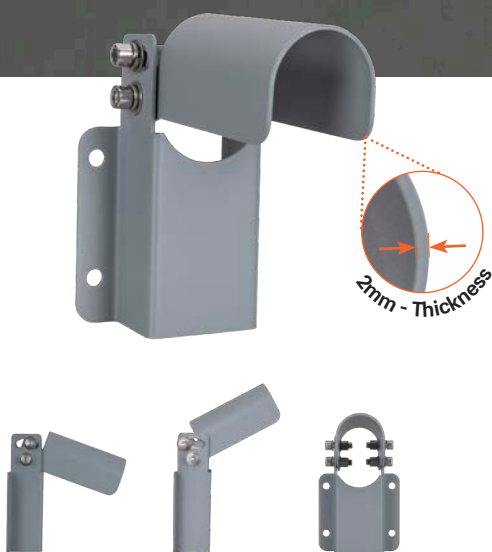


Aslo

BRIGHTER LIFE

WALL BRACKETS FOR STREET LIGHT

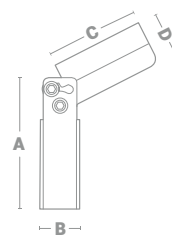
Accessories for street lights




STREET LIGHT ADJUSTABLE WALL BRACKET

Main features:

- > Use: Outdoor use for street / garden street lights;
- > Adjustable bracket to position the light beam at the desired angle;
- > Packaging Content: 4 M8 screws;
- > Material: Iron;
- > Finish: Grey



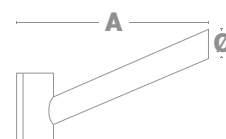
REF.	AxBxCxD		EAN.
ASSPALR	140x42x100x48mm	1	5604612728182




STREET LIGHT WALL BRACKET

Main features:

- > Use: outdoor use for street / garden street light;
- > 500mm long bracket that allows the street light to be installed at a considerable distance from the wall;
- > Packaging content: 4 M8 screws;
- > Finish: Grey;
- > Material: Iron



REF.	AxØ		EAN.
ASSPLR50	500x60mm	1	5604612728175

Aslo

BRIGHTER LIFE



SMD LED FLOODLIGHT RGB

Outdoor Illumination - Floodlight

aslo.pt





Technical data:

Use:	Outdoor
Installation mode:	Wall/floor (with ASEAP165 accessory)
LED type:	LED SMD 2835 50W - 42un. 100W - 84un.
Driver:	DOB
Voltage:	220-240V AC
Beam angle (Lens):	120°x90°
Colour:	RGB
Lifespan:	36.000 h
ON/OFF switching cycles:	15.000
Surge protection:	3kV
Power factor:	≥0,9
Insulation class:	
IP code:	IP65
Material:	Diffuser: Glass Body: Aluminium
Standards:	RoHs, CE



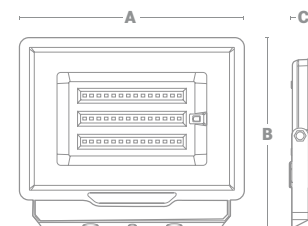
Main features:

- > Adjustable fixing bracket;
- > Ultra-thin design;
- > 4 different light modes (red light (R), green (G), blue (B) and white (W));
- > Brightness adjustment;
- > 4 operating modes: **Flash** (3-colour sequential change), **Strobe** (6-colour sequential change), **Fade** (gradual change of 3 colours) e **Smooth** (gradual change of 6 colours);
- > It includes a remote control which allows you to take advantage of various functionalities, such as changing the light intensity (dimmable) and changing the shade of colours (allows you to create several different environments:).



SMD LED FLOODLIGHT RGB

REF.	Power	Colour	AxBxC			EAN.
ASLIM50RGBP	50W	RGB	217x185x26mm	1	20	5604612728151
ASLIM100RGBP	100W		287x240x32mm	1	10	5604612728168

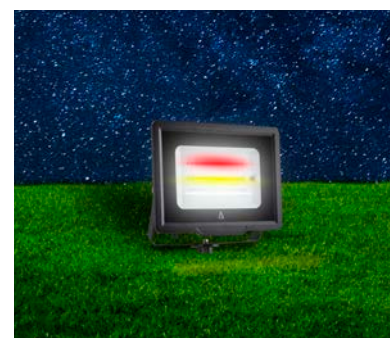


To ensure a better experience with the SMD RGB LED floodlight, ASLO has at your disposal, an accessory that must be purchased separately.

ALUMINIUM SPIKE FOR FLOODLIGHTS



REF.			EAN.
ASEAP165	1	100	5604612728199



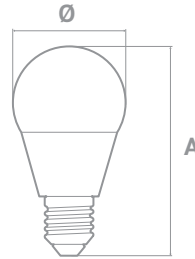
Aslo

BRIGHTER LIFE



BULBS




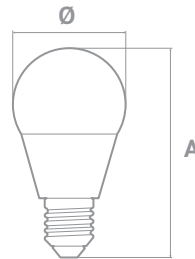


Technical data:

Use:	Indoor
Lamp holder:	E27
LED type:	LED SMD 2835
Voltage:	220-240V AC
Beam angle:	220°
Dimmable:	No
Lifespan:	20.000h
ON/OFF switching cycles:	15.000
Colour rendering index:	CR180
Displacement factor:	0,50
Energy efficiency class:	A G F
Normas:	RoHS / CE

A60 STANDARD E27 LED BULB


REF.	Power	Lumens	K	ØxA		EAN.
ASLA608540	8,5W	806LM ^{360°}	4000	55x110mm	1	5604612726386
ASLA608565			6500			5604612726379

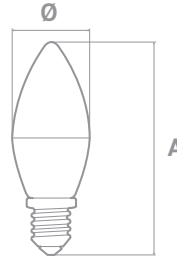


Technical data:

Use:	Indoor
Lamp holder:	E27
LED type:	LED SMD 2835
Voltage:	220-240V AC
Beam angle:	220°
Dimmable:	No
Lifespan:	20.000h
ON/OFF switching cycles:	15.000
Colour rendering index:	CR180
Displacement factor:	0,50
Energy efficiency class:	A G F
Normas:	RoHS / CE

3PCS SET A60 E27 LED BULB 8.5W


REF.	Power	Lumens	K	ØxA		EAN.
ASC3LA608540	8,5W	806LM ^{360°}	4000	55x110mm	10	5604612726492
ASC3LA608565			6500			5604612726485

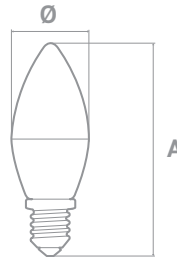


Technical data:

Use:	Indoor
Lamp holder:	E14
LED type:	LED SMD 2835
Voltage:	220-240V AC
Beam angle:	180°
Dimmable:	No
Lifespan:	20.000h
ON/OFF switching cycles:	15.000
Colour rendering index:	CRI80
Energy efficiency class:	A G F
Normas:	RoHS / CE

C37 E14 LED CANDLE BULB 4.5W


REF.	Power	Lumens	K	ØxA		EAN.
ASLC374540	4,5W	470LM ^{360°}	4000	35x100mm	1	5604612726423
ASLC374565			6500			5604612726416

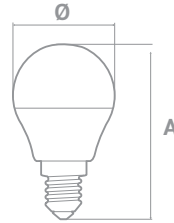


Technical data:

Use:	Indoor
Lamp holder:	E14
LED type:	LED SMD 2835
Voltage:	220-240V AC
Beam angle:	180°
Dimmable:	No
Lifespan:	20.000h
ON/OFF switching cycles:	15.000
Colour rendering index:	CRI80
Energy efficiency class:	A G F
Normas:	RoHS / CE

3PCS SET C37 E14 LED CANDLE BULB 4.5W


REF.	Power	Lumens	K	ØxA		EAN.
ASC3LC374540	4,5W	470LM ^{360°}	4000	35x100mm	10	5604612726522
ASC3LC374565			6500			5604612726539

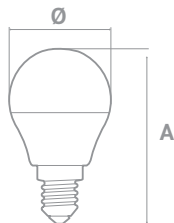


Technical data:

Use:	Indoor
Lamp holder:	E14
LED type:	LED SMD 2835
Voltage:	220-240V AC
Beam angle:	180°
Dimmable:	No
Lifespan:	20.000h
ON/OFF switching cycles:	15.000
Colour rendering index:	CRI80
Energy efficiency class:	A G F
Normas:	RoHS / CE

G45 DROP E14 LED BULB 4.5W


REF.	Power	Lumens	K	ØxA		EAN.
ASLG454540	4,5W	470LM ^{360°}	4000	40x80mm	1	5604612726409
ASLG454565			6500			5604612726393

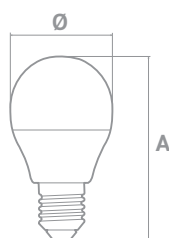


Technical data:

Use:	Indoor
Lamp holder:	E14
LED type:	LED SMD 2835
Voltage:	220-240V AC
Beam angle:	180°
Dimmable:	No
Lifespan:	20.000h
ON/OFF switching cycles:	15.000
Colour rendering index:	CRI80
Energy efficiency class:	A G F
Normas:	RoHS / CE

3PCS SET G45 DROP E14 LED BULB 4.5W

REF.	Power	Lumens	K	ØxA		EAN.
ASC3LG454540	4,5W	470LM ^{360°}	4000	40x80mm	10	5604612726508
ASC3LG454565			6500			5604612726515

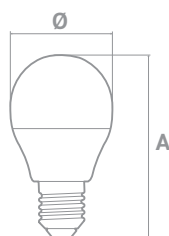


Technical data:

Use:	Indoor
Lamp holder:	E27
LED type:	LED SMD 2835
Voltage:	220-240V AC
Beam angle:	180°
Dimmable:	No
Lifespan:	20.000h
ON/OFF switching cycles:	15.000
Colour rendering index:	CR180
Energy efficiency class:	A G F
Normas:	RoHS / CE

G45 SPHERICAL E27 LED BULB 4.5W

REF.	Power	Lumens	K	ØxA	☐	EAN.
ASLL454540	4,5W	470LM ^{360°}	4000	40x80mm	1	5604612726447
ASLL454565			6500			5604612726430

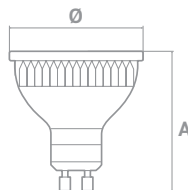


Technical data:

Use:	Indoor
Lamp holder:	E27
LED type:	LED SMD 2835
Voltage:	220-240V AC
Beam angle:	180°
Dimmable:	No
Lifespan:	20.000h
ON/OFF switching cycles:	15.000
Colour rendering index:	CR180
Energy efficiency class:	A G F
Normas:	RoHS / CE

3PCS SET G45 SPHERICAL E27 LED BULB 4.5W


REF.	Power	Lumens	K	ØxA	☐	EAN.
ASC3LL454540	4,5W	470LM ^{360°}	4000	40x80mm	10	5604612726546
ASC3LL454565			6500			5604612726553



Technical data:

Use:	Indoor
Lamp holder:	GU10
LED type:	LED SMD 2835
Voltage:	220-240V AC
Beam angle:	38°
Dimmable:	No
Lifespan:	20.000h
ON/OFF switching cycles:	15.000
Colour rendering index:	CR180
Energy efficiency class:	A G F
Normas:	RoHS / CE

GU10 LED GLASS LAMP 4.9W 38°

REF.	Power	Lumens	K	ØxA		EAN.
ASLEDV104930			3000			5604612726454
ASLEDV104940	4,9W	445LM ^{90°}	4000	50x55mm	10	5604612726461
ASLEDV104965			6500			5604612726478

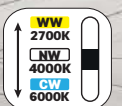
Aslo

BRIGHTER LIFE



LIVING SERIES 3-CIRCUIT TRACK LIGHT

Indoor lighting - Surface-mounted
aslo.pt





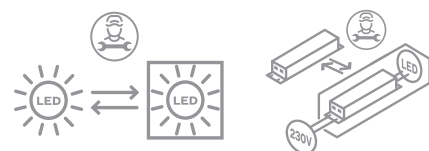
Technical data:

Use:	Indoor
Type of LED:	LED COB
Driver:	KGP
Voltage:	220-240V AC
Beam angle (Lens):	38°
Colour temperature DIP switch :	2700K 4000K 6000K
Dimmable:	No
Lifespan:	30.000h
ON/OFF switching cycles:	25.000
Colour rendering index:	CRI>90
Insulation class:	II
Energy efficiency class:	A G F
IP code:	IP20
Material:	Aluminium die casting
Normas:	RoHS / CE

LIVING SERIES

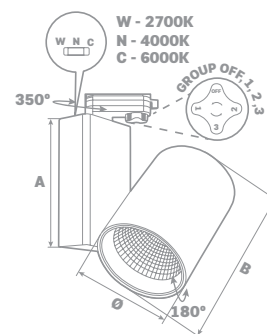
The LIVING track light is the ideal model for installations where versatility is key, such as shop lighting, hotels, restaurants, buildings, etc. This model is supplied with a 38° aluminium reflector and can be replaced by reflectors with other opening angles (24° and 60°). It has a colour temperature selector, offering the possibility of choosing the desired colour for each environment. The body is made of a high-quality cast aluminium heat sink with convection dissipation technology. The quick dissipation process beneficial to minimise light degradation.

POSSIBILITY OF OPERATING BY GROUPS / CIRCUITS

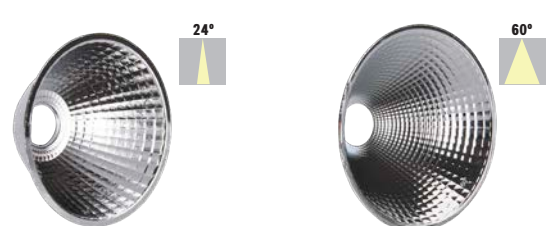


3-CIRCUIT 3-CCT LED TRACK LIGHT

REF.	Power	Colour	Lumens	ØxAxB	Box	Case	EAN.
ASLIV20C3BR	20W	○	1811LM ^{120°}	90x248 x145 mm	1	10	5604612723866
ASLIV20C3PR		●					
ASLIV40C3BR	40W	○	3368Lm ^{120°}	90x248 x145 mm	1	10	5604612723897
ASLIV40C3PR		●					



To ensure a better experience with the Living series, ASLO has accessories at your disposal that must be purchased separately from the track light.



ALUMINIUM REFLECTOR FOR LED TRACK LIGHT LIVING

REF.	Beam angle	Box	EAN.
ASRALIV24	24°	1	5604612723965
ASRALIV60	60°	1	5604612723972



ALUMINIUM RING FOR LED TRACK LIGHT

REF.	Colour	Box	EAN.
ASAALIVBR	○	1	5604612723941
ASAALIVPR	●	1	5604612723958

Aslo

BRIGHTER LIFE



LOUNGE SERIES 3-CIRCUIT TRACK LIGHT

Indoor lighting - Surface-mounted
aslo.pt

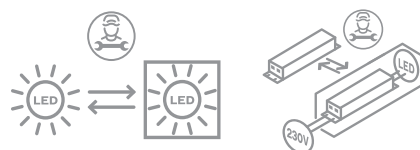




Technical data:

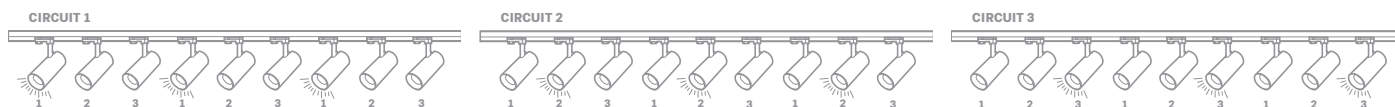
Use:	Indoor
Type of LED:	LED COB
Driver:	KGP
Voltage:	220-240V AC
Beam angle (Lens):	38°
Colour temperature DIP switch :	2700K 4000K 6000K
Dimmable:	No
Lifespan:	30.000h
ON/OFF switching cycles:	25.000
Colour rendering index:	CRI>90
Displacement factor:	D.F. 0,90
Insulation class:	□
Energy efficiency class:	A G F
IP code:	IP20
Material:	Aluminium die casting
Standards:	RoHS / CE

LOUNGE SERIES



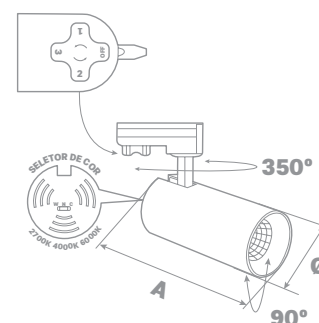
ASLO's track light LOUNGE is a stylish option with a built-in driver design and high luminous performance. It allows for 350° rotation and 0°-90° tilt for greater flexibility when installing and directing light to the desired spot. The body is made of a high-quality die-cast aluminium heat sink with convection dissipation technology. The quick dissipation process is beneficial to minimise light degradation. The track light LOUNGE is ideal for residential use and for highlighting products, commercial spaces, museums, car dealerships, etc. in a simple way.

POSSIBILITY OF OPERATING BY GROUPS / CIRCUITS



3-CIRCUIT LED TRACK LIGHT

REF.	Power	Colour	Useful lumens	ØxA	Box	Box	EAN.
ASLOU20C3BR	20W	○	1829Lm ^{120°}	74x163,5 mm	1	24	5604612723903
ASLOU20C3PR		●					5604612723910
ASLOU30C3BR	30W	○	2461Lm ^{120°}	90x190,2 mm	1	15	5604612723934
ASLOU30C3PR		●					5604612723927



Aslo

BRIGHTER LIFE

LINE II SERIES LED WATERPROOF FIXTURE

Outdoor/indoor lighting

Luminous efficacy:
140Lm/W



Colour temperature DIP switch:
3000K - 4000K - 6000K

Quick input/output connector:
(in series connection)

Made entirely of polycarbonate, the new LINE LED II waterproof fixture is the ideal solution for any type of environment, thanks to the colour temperature DIP switch, which allows a choice between 3000K, 4000K and 6000K. With an innovative and modern design, differing from traditional waterproof fixture with smaller dimensions, LINE LED II is a very robust luminaire that offers the consumer a reliable and economical solution for use in demanding spaces.



M20 Cable gland



Cut-out for cable pass through



Fixing clip

Applications:

- Residential garages;
- Parking lots;
- Warehouses;
- Industrial spaces;
- Locker rooms.

Main features:

- > Colour temperature DIP switch: 3000K, 4000K and 6000K, allows you to adapt the room atmosphere to your preference.
- > Possibility of in-series connection to a set of luminaires, by means of a cable gland or an optional accessory (ASULLII);
- > Reduced dimensions;
- > No need to open the fixture to make connections;
- > Easy connection - Quick input/output connector;
- > Easy installation: the mounting brackets can be moved along the luminaire and positioned anywhere.

Installation modes:

> Ceiling



> Suspended



> Series connection



Technical data:



Use:	Indoor/ Outdoor	Displacement factor:	0.9
LED type:	SMD 2835	IP code:	IP65
Voltage:	220-240V AC	Impact resistance rating:	IK08
Beam angle:	120°	Insulation class:	
Dimmable:	No	Energy class:	
Lifespan:	35.000h	Standards:	RoHS / CE
ON/OFF switching cycles:	15.000		

LED WATERPROOF FIXTURE

REF.	Power	Lumens	AxBxC			EAN.
ASLLII20C3	20W	2800Lm ^{360°}	665x75x63mm	1	12	5604612724528
ASLLII36C3	36W	5040Lm ^{360°}	1265x75x63mm	1	9	5604612724535
ASLLII55C3	55W	7700Lm ^{360°}	1500x75x63mm	1	9	5604612724542

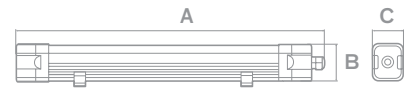


LED WATERPROOF FIXTURE WITH EMERGENCY KIT

REF.	Power	Lumens	AxBxC			EAN.
ASLLII36C3EM	36W	5040Lm ^{360°}	1265x75x63mm	1	9	5604612724566
ASLLII55C3EM	55W	7700Lm ^{360°}	1500x75x63mm	1	9	5604612724559

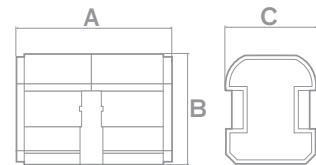
Features of the emergency kit:

> Power: 2.5W and autonomy: 3h.





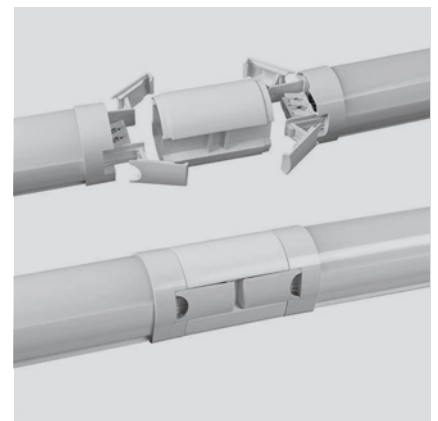
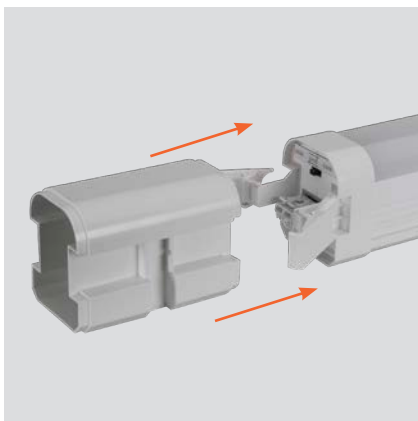
To ensure a better experience with the Line II series, ASLO has an accessory which can be purchased separately from the Line II series.

Available accessory - Not included



JUNCTION FOR LINE LED WATERPROOF FIXTURE

REF.	AxBxC			EAN.
ASULLII	106x75,7x63,7mm	1	50	5604612724573



Aslo

BRIGHTER LIFE

SERIES **ULT**
ULTRA THIN LED CEILING LIGHT

Indoor lighting – Surface-mounted
aslo.pt



The ULT series LED ceiling light has an ultra-slim and elegant design, without compromising the aesthetics of your space. It contains a colour temperature DIP switch (3000K, 4000K and 6000K), offering the possibility to choose the desired colour for each environment. This ceiling light is designed to be used in residential areas, kitchens, living rooms, among others.

SERIES ULT



WW - 3000K
NW - 4000K
CW - 6000K



Key features:

- > Ultra-slim and elegant design;
- > Built-in quick connector for easy installation;
- > Colour temperature DIP switch: 3000K, 4000K and 6000K, to adapt the room atmosphere to your preference.

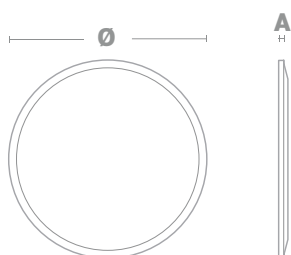
Main features:

Use:	Indoor
Installation mode:	Wall / ceiling
Colour temperature DIP switch:	3000K 4000K 6000K
Dimmable:	No
LED type:	LED SMD 2835
Beam angle:	110°
Input voltage:	200-240V AC (50-60Hz)
Colour rendering index:	82
Displacement factor:	0,90
IP code:	IP20
Lifespan:	30.000h
ON/OFF switching cycles:	20.000
Energy efficiency class:	19W 33W
Material:	Diffuser: Polystyrene Base: Polycarbonate
Insulation class:	
Standards:	CE and RoHS



ULTRA THIN LED CEILING LIGHT

REF.	W	Luminous efficacy Lm/W	Lumens	ØxA			EAN.
ASULT19C3	19W	130 Lm/W	2500 ^{360°}	300x21 mm	1	8	5604612725181
ASULT33C3	33W	120 Lm/W	3900 ^{360°}	500x25 mm	1	4	5604612725198



Aslo

BRIGHTER LIFE

PARK SERIES LED FLOODLIGHT FOR DEMANDING APPLICATIONS

Outdoor lighting

LED
hi-tech

Luminous
efficacy:
140Lm/W



ASLO's new professional PARK series floodlights are a high quality, high efficiency product that provides high power illumination to be used mainly in commercial or industrial spaces. They feature an innovative design, with a compact and robust structure and are very easy to use. This is reflected in the details of their design.

With high impact resistance (IK08) and a high degree of waterproofing (IP66), PARK floodlights are ideal for demanding environments such as industrial buildings, factories, warehouses, work areas, gardens, car parks, outdoor sports centres, etc.

Key features:

- > Easy to open the driver box cover, reducing the difficulty and time of installation and maintenance;
- > A support bar is provided to support the driver box cover, so that a single person can easily perform any task. Reduced number of maintenance personnel = reduced costs;
- > Total guarantee of safe maintenance, thanks to the knife switch in the driver box. When the cover is opened, the power supply is cut off automatically;
- > Built-in connection terminal;
- > The PARK floodlight has two input/output ports providing a waterfall lighting effect;
- > The floodlight is equipped with a breather valve allowing it to be used in harsh environments without compromising its lifespan;
- > The foldable cover has a scale designed to precisely adjust the required angle and facilitate the alignment of a set of luminaires.

Technical data:

Use:	Outdoor	IP code:	IP66
LED chip:	Lumileds SMD 3030	Impact resistance rating:	IK08
Driver:	Philips	Energy efficiency class:	A 
Voltage:	220-240V AC	Product material:	> Structure: Cast aluminium;
Beam angle:	110°		> Fixing bracket: Cold-rolled steel steel SPCC
Dimmable:	No		> Finish: Powder-coated
Lifespan:	50.000h		> Lens / Diffuser: Tempered glass
ON/OFF switching cycles:	15.000		
Displacement factor:	0.99		
(SPD) Surge protection device:	10Kv		
		Standards:	RoHS / CE



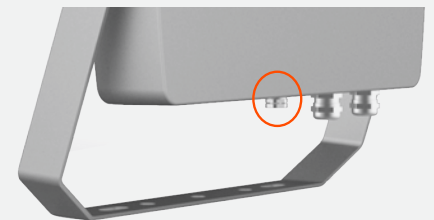
LOOP IN/OUT connection

- > Possibility of LOOP IN/OUT connection



Robust bracket with scale

- > Adjustable scale 0~270°, engraved markings on the cast iron for easy orientation of the luminaires.



Breather valve

- > Allows operation in a humid environment without compromising service life.

- 1 - The folding cover of the power supply box facilitates the maintenance of the driver.
- 2 - In-line connection available with extra connection device.
- 3 - AC
- 4 - Arched bracket with more space, easier to install, reducing installation costs.





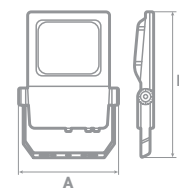
- > Knife switch for protection against power cut-off during maintenance



- > Support bar to prevent the driver box cover from falling off

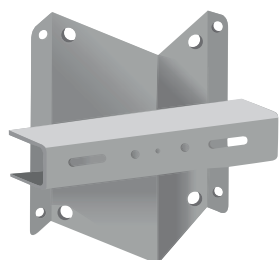
SMD LED FLOODLIGHT

REF ^a	W	Useful Lm	K	A (mm)	B (mm)			EAN.
ASPARK25050C	250	35000		399	611	1	2	5604612725129
ASPARK30050C	300	42000	5000	399	611	1	2	5604612725136



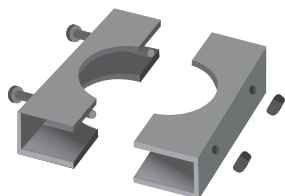
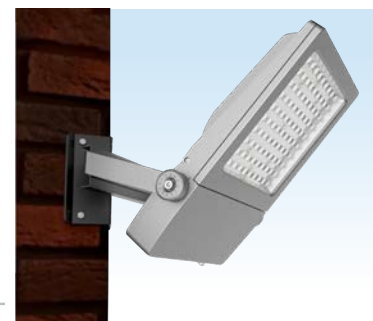
To ensure a better experience with the PARK series, ASLO has a range of accessories that can be purchased separately from the LED floodlight - PARK series.

Available accessories - Not included



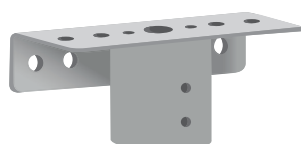
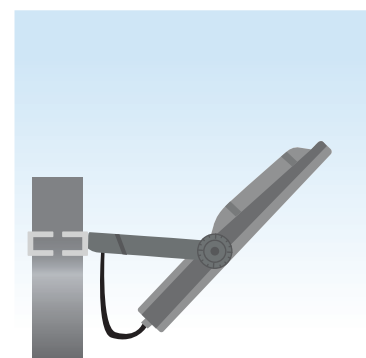
CORNER ADAPTER FOR FLOODLIGHT PARK

REF.			EAN.
ASAEPARK	1	1	5604612725150



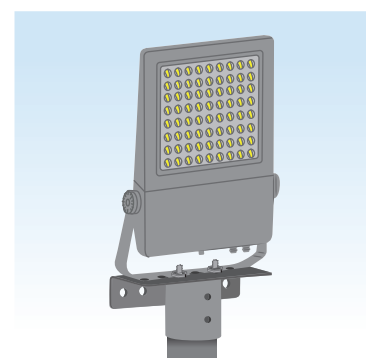
POLE ADAPTER FOR FLOODLIGHT PARK

REF.			EAN.
ASAPPARK	1	1	5604612725143

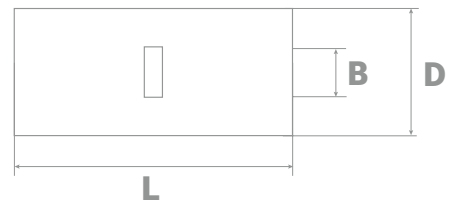


TOP POLE BRACKET FOR FLOODLIGHT PARK


REF.			EAN.
ASATPPARK	1	1	5604612729868



Aslo Electric



TUBE CONNECTOR

REF	CROSS-SECTION	L (mm)	D (mm)	B (mm)	mm ²		EAN.
ASU01	1.5mm ²	20	3,7	1,8	0,5-1,5	100	5604612659455
ASU02	2.5mm ²	20	4	2,5	1.5 - 2.5	100	5604612128043
ASU04	4mm ²	20	4,8	3,1	2.5-4	100	5604612128050
ASU06	6mm ²	25	5,5	3,8	4-6	100	5604612126643
ASU10	10mm ²	30	6,8	4,8	10	100	5604612126667
ASU16	16mm ²	35	7,5	5,5	16	100	5604612126674
ASU25	25mm ²	40	9	7	25	100	5604612128067
ASU35	35mm ²	45	10,5	8,1	35	100	5604612126681
ASU50	50mm ²	50	12,5	9,8	50	50	5604612124236
ASU70	70mm ²	55	14,5	11,5	70	50	5604612124243
ASU95	95mm ²	60	17,5	13,5	95	30	5604612126698
NEW ASU120	120mm ²	65	19	16,2	120	20	5604612726164
NEW ASU150	150mm ²	70	21	18	150	20	5604612726171
NEW ASU185	185mm ²	75	23	19,6	185	10	5604612726188

Aslo

BRIGHTER LIFE

SONAR SERIES INDUSTRIAL LED HIGH LIGHT BAY

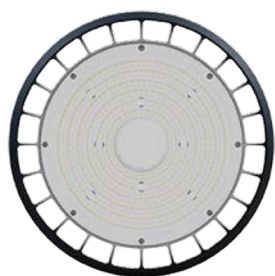
Industrial lighting
aslo.pt



LED
hi-tech

**Luminous
efficacy:
150Lm/W**

The new high light bay SONAR from ASLO is a high brightness LED industrial luminaire with a high energy efficiency of up to 150 lm/W. The die-cast structure, which allows excellent heat dissipation, has a surface treatment by powder spraying process, which gives it a strong and corrosion-resistant texture. Manufactured with high quality and high efficiency LEDs from LUMILEDS and a PHILIPS driver, the SONAR high light bay is presented as the professional solution, to be used in any area that requires a high-performance solution.



Large light emitting area




Fast heat dissipation



The structure of the high light bay was designed with the intention of having the possibility to place a sensor while maintaining its integrity and appearance.




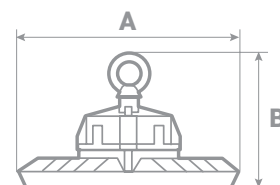
Technical data:

Use:	Indoor/Outdoor
LED chip:	Lumileds SMD 2835
Driver:	Philips
Voltage:	220-240V AC
Beam angle:	90°
Dimmable:	No
Lifespan:	50.000h
ON/OFF switching cycles:	15.000
Displacement factor:	0.985
Surge Protection device (SPD):	1Kv
IP code:	IP65
Impact resistance rating:	IK08
Energy efficiency class:	
Product material:	> Structure: ADC12 Die-casting Aluminium alloy > Finish: Powder-coated > Lens / diffuser: PC
Standards:	RoHS / CE

Main features:

- > Super stable quality performance;
- > Fast heat dissipation to ensure a long service life;
- > Remote control (optional);
- > Microwave sensor (optional) to save energy;
- > Suitable for large commercial areas - supermarkets, warehouses, workshops and others.

REF.	W	Useful Lm	K	A (mm)	B (mm)		EAN.
ASSONAR10040	100	15500		275	157	1	5604612725037
ASSONAR15040	150	23000	4000	285	159	1	5604612725044
ASSONAR20040	200	30500		305	171	1	5604612725051



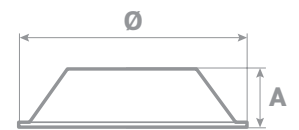
To ensure a better experience with the SONAR series, ASLO has a range of accessories, which can be purchased separately from the LED industrial high light bay - SONAR series.

Available accessories - Not included



ALUMINIUM REFLECTOR FOR HIGH LIGHT BAY

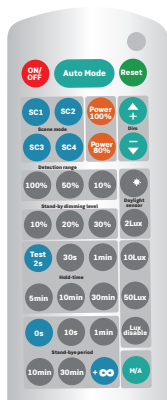
REF.			Ø (mm)	A (mm)	EAN.
ASRASONAR	1	8	37,4	110	5604612725112



PLUG-IN MICROWAVE MOTION LIGHT SENSOR

REF.			EAN.
ASSMSONAR	1	50	5604612725068

- > Detection area: 25%, 50%, 75% and 100%;
- > Hold time: 2s~30min;
- > Installation height: <15m (ceiling mount);
- > Detection range: max. Ø12m x 15m;
- > Detection angle: 30°~150°;
- > Features several operating modes:
 - Dimmable function, controls the brightness of the high light bay



REMOTE CONTROL FOR MICROWAVE MOTION SENSOR SONAR

REF.			EAN.
ASCRSONAR	1	20	5604612725099

- The remote control allows you to take advantage of various functions that the microwave sensor such as:
- Automatic mode: the sensor starts working with the latest settings before it is switched on/off.
 - Dimmable function, control the brightness of the high light bay;
 - Control the detection range;
 - Hold time;
 - Daylight sensor;
 - Standby time: 0s / 10s / 1min / 30 min / +∞

Aslo

BRIGHTER LIFE



TRON SERIES INDUSTRIAL LED HIGH LIGHT BAY

Industrial lighting



**Luminous efficacy:
150Lm/W**

The new high light bay TRON is the ideal choice for indoor and outdoor industrial lighting.

Thanks to its innovative design with a large light-emitting surface, it produces uniform, low-brigntness and glare-free illumination.

The heat sink is designed with an air convection hole, which favours heat dissipation without affecting the power supply and ensures the long life of the luminaire.

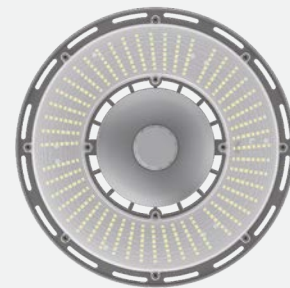
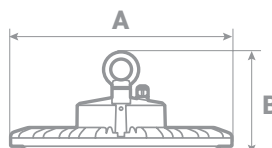
Using energy-efficient Lumileds-Philips LEDs and an international standard ZHAGA socket for sustainability and intelligent energy management, the high light bay TRON enables further savings on energy bills.

Technical data:

Use:	Indoor/Outdoor	Impact resistance rating:	IK08
Application:	Suspended in the ceiling	Energy efficiency class:	A G
LED chip:	Lumileds SMD 2835	Product material:	> Structure: ADC12 Die-casting Aluminium alloy > Finish: Powder-coated
Driver:	Lifud		> Lens / diffuser: PC
Voltage:	220-240V AC	Standards:	RoHS / CE
Beam angle:	90°		
Dimmable:	No		
Lifespan:	50.000h		
ON/OFF switching cycles:	15.000		
Displacement factor:	0.99		
IP code:	IP65		

Main features:

- > High efficacy and excellent luminous uniformity;
- > Excellent heat dissipation to ensure a long service life;
- > Intelligent control: daylight sensor;
- > Remote control (optional)
- > Microwave sensor (optional);
- > Suitable for large commercial areas, sports halls - indoor, warehouses, manufacturing areas, car dealerships, auditoriums, etc.



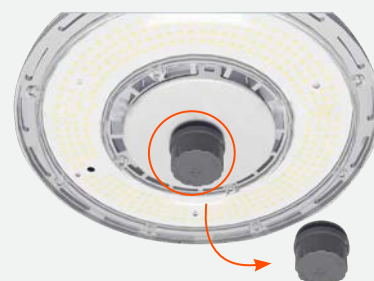
> Large light-emitting surface



> Excellent heat dissipation



Zhaga Pin 4



> **ZHAGA Pin 4** - Built-in international standard Zhaga socket, which can be adapted to a variety of general sensor modules to meet customers' multiple needs.

Note:
Zhaga is an industry consortium that aims to standardise the interface specifications between LED luminaires and light sources. The aim is to achieve interchangeability between products made by different manufacturers.



REF.	W	Useful Lm	K	A	B		EAN.
ASTRON10040	100	15000				1	5604612725006
ASTRON15040	150	22700	4000	310 mm	141 mm	1	5604612725013
ASTRON20040	200	30500				1	5604612725020

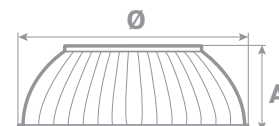
To ensure a better experience with the TRON Series, ASLO has a range of accessories which can be purchased separately from the Industrial LED high bay - TRON Series.

Available accessories - Not included



POLYCARBONATE REFLECTOR FOR TRON HIGH BAY

REF.	Ø (mm)	A (mm)			EAN.
ASRPCTRON	410	144	1	8	5604612725105



PLUG-IN MICROWAVE MOTION / LIGHT SENSOR

REF.			EAN.
ASSMTRON	1	50	5604612725075

Main features:

- > Detection area: 25%, 50%, 75% and 100%;
- > Hold time: 5s~30min;
- > Installation height: <12m (ceiling mount);
- > Detection range: 16m max.
- > Motion detection: 0.5~1m/s;
- > Contains several operating modes:
 - Daylight Ratio - light level ON /OFF;
 - Auto ON / OFF;
 - No daylight;
 - Dimming of the luminous intensity



REMOTE CONTROL FOR MICROWAVE MOTION SENSOR TRON

REF.			EAN.
ASCRTRON	1	20	5604612725082

The remote control allows you to take advantage of various functions contained in the microwave sensor, such as:

- > Hold time;
- > Daylight detection limit;
- > Detection area;
- > Standby time;
- > Standby time level (brightness adjustment);
- > Power / Power output adjustment.

Aslo

BRIGHTER LIFE

DOWNLIGHT FRAMES

Indoor lighting - Recessed

aslo.pt

New range of trims for recessed use with a modern and innovative design.

Aluminium body with electrostatic painting for a more durable finish, without stains, drips or bubbles.

For use with a traditional GU10 bulb or LED module with External Driver (soon available at ASLO).

Available in adjustable models, which allows you to direct the light to the desired areas, and in the fixed recessed model.

This version is anti-glare, it can take a deep regressed lamp, thus reducing the intensity of light in the eyes, keeping the light subtle and cosy.

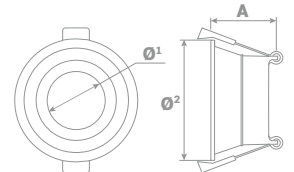
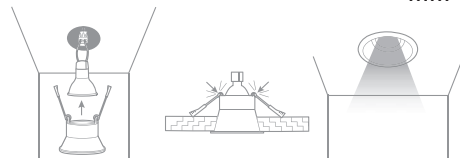
For use in installations where a high level of aesthetics and visibility is required, as well as a pleasant atmosphere with excellent optical comfort.

ROUND ALUMINIUM DEEP FIXED TRIM*

IP 20 CE RoHS
EAN.



REF ^a	Ax \emptyset^1 x \emptyset^2	\emptyset				EAN.
ASDL17075ABR	46,8x40,3x85 mm	85 mm	75~80 mm	1	100	5604612724313

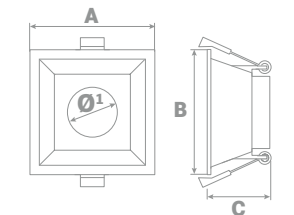
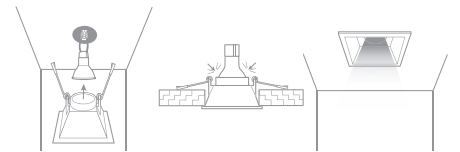


SQUARE ALUMINIUM FIXED DEEP TRIM*

IP 20 CE RoHS
EAN.



REF ^a	Ax \emptyset^1 xBxC					EAN.
ASDL17090EBR	100x38x100x50 mm	100 mm	90~95 mm	1	100	5604612724337

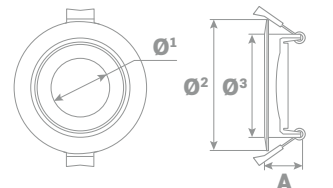
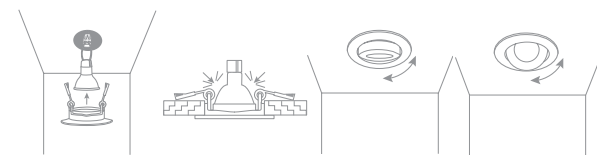


ADJUSTABLE ALUMINIUM ROUND TRIM*

IP 20 CE RoHS
EAN.



REF ^a	\emptyset^1 x \emptyset^2 x \emptyset^3 xA	\emptyset				EAN.
ASDL17075CBR	40,3x90x69,7x24,8 mm	90 mm	70~80 mm	1	100	5604612724320

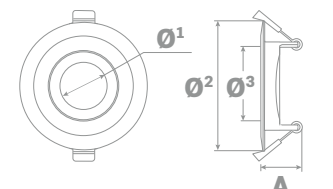
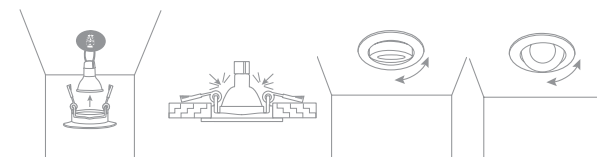


ADJUSTABLE ALUMINIUM ROUND TRIM*

IP 20 CE RoHS
EAN.



REF ^a	\emptyset^1 x \emptyset^2 x \emptyset^3 xA	\emptyset				EAN.
ASDL17090DBR	40,3x110x75x32 mm	110 mm	90~95 mm	1	100	5604612724344



*Note: Lamp GU10 and GU10 holder not included, they must be purchased separately.

Aslo

BRIGHTER LIFE



DELUXE SERIES

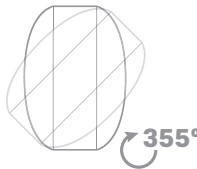
INDOOR WALL LIGHT

Indoor lighting - Surface-mounted

aslo.pt



The "DELUXE V" wall light is a small curved half-moon wall lamp with upwards and downwards lighting. The emitted light gently sweeps over the wall to create a soft atmosphere. It is equipped with a mounting seat with a dual rotating shaft, which allows the diffuser to rotate 355° to precisely direct the lighting where the light is needed. In addition, the diffuser can make a 30° up and down adjustment to shade the light, which can satisfy more personal preferences.



Main features:

- > Modern design;
- > 2x 90° light beams;
- > Ideal for household lighting, hotels, offices, corridors, among others;
- > Includes a double flexible rotating shaft: 355° horizontal direction and 30° vertical direction;
- > Quick installation with connector.

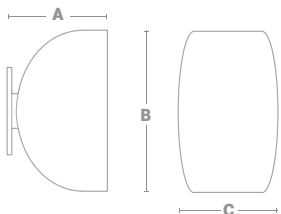


DELUXE SERIES



INDOOR WALL LIGHT

REF	K	AxBxC			EAN.
ASDELV830BR	3000	101x170x105	1	24	5604612723576
ASDELV840BR	4000	mm	1	24	5604612723583



Technical data:

Use:	Indoor
Power:	2x4W
Lumens:	640Lm
Modo de instalação:	Surface -mounted
Color temperature:	3000K 4000K
Dimmable:	No
Type led:	LED SMD 2835
Beam angle:	2x90°
Power supply:	100-240V AC (50-60Hz)
Colour rendering index:	80
Power factor:	0,9
Output current:	105mA
IP code:	IP20
Lifespan:	50.000h
ON/OFF switching cycles:	35.000
Energy efficiency class:	
Material:	Body: SPCC - Cold rolled steel Optic: Polycarbonate
Insulation class:	
Standards:	CE and RoHS

Aslo

BRIGHTER LIFE

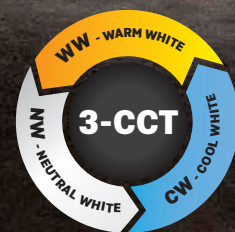


DELUXE SERIES

INDOOR WALL LIGHT

Indoor lighting - Surface-mounted

aslo.pt

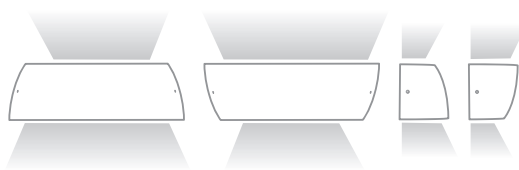
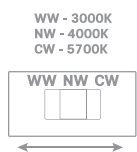


The "DELUXE H" wall light is an indoor wall lamp with upwards and downwards lighting design. It has a flower vase shape and a soft and compact appearance, suitable for decorative lighting. The ADC12 aluminium frame offers optimal thermal management.

The upwards and downwards lighting has a wide beam angle of 120°, which considerably increases the decorative effect. It features a DIP switch, offering the possibility to choose the desired colour for each environment. This wall light is designed to be used in residential areas, bedrooms, living rooms, hallways, halls and offices, etc.

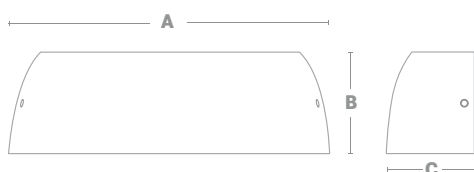


DELUXE SERIES



INDOOR WALL LIGHT

REF ^a	AxBxC			EAN.
ASDELH8C3BR	242x77x67	1	24	5604612723552
ASDELH8C3PR	mm	1	24	5604612723569



Main features:

- > CCT changeable through DIP switch: 3000K, 4000K and 5700K, allows you to match the space with an environment to your taste;
- > Several applications: Different light effects.



Technical data:

Use:	Indoor
Power:	8W
Lumens:	770Lm
Light:	Direct - 3,2W Indirect - 4,8W
Installation mode:	Surface-mounted
Adjustable CCT:	3000K 4000K 5700K
Dimmable:	No
Type led:	LED SMD 2835
Beam angle:	2x120°
Power supply:	200-240V AC (50-60Hz)
Colour rendering index:	80
Power factor:	0,9
Output current:	105mA
IP code:	IP20
Impact resistance rating:	IK06
Lifespan:	50.000h
ON/OFF switching cycles:	35.000
Energy efficiency class:	
Product material:	Body: Aluminum Optics: Polycarbonate
Insulation class:	
Standards:	CE and RoHS

Aslo

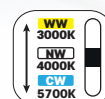
BRIGHTER LIFE



PEXT SERIES EYELID LED BULKHEAD LIGHT

Outdoor lighting - Surface-mounted

aslo.pt



The new bulkhead light LED PEXT is IP65 waterproof and dustproof and has UV protection against discolouration. Manufactured with double insulation, which allows optimum isolation of the electrical parts from contact with the outside, providing greater safety. It has a mechanical protection rating against impacts, shocks and vibrations of IK08, suitable for areas of constant exposure to shocks or vandalism.

The frame is made entirely of plastic, ABS base and PC diffuser, which makes this product lighter, easier to install and to maintain. It has a high efficiency SMD 2835 LED light source and a high transmittance Polycarbonate (PC) cover, which allows a uniform and comfortable light emission.

It has a DIP switch, incorporated into the LED chip, offering the possibility to choose the desired colour for each environment, which makes this product ideal for gardens, terraces, passageways or access areas, porches, paths, garage entrance areas or as decorative lighting in parks or gardens. It can also be used in public areas such as staircases, atriums, reception areas, corridors, etc.

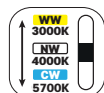
Main features:

- > High lumen efficiency: >100lm/W (Total Lumens) / Light Source: 140Lm/W (Useful Lumens)
- > Adjustable CCT (3000K/4000K/5700K) with built-in DIP switch on LED chip.
- > IP65 water and dust proof for the whole luminaire.
- > IK08 mechanical protection against impacts.
- > Cable entry at the end as well as at the rear, which allows its use in different application areas.
- > Quick installation, through quick connector that enables Loop in/Loop out.

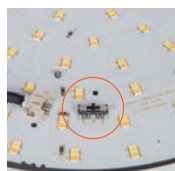
PEXT SERIES



FLICKER FREE



Pre cut for entrance / exit of cables



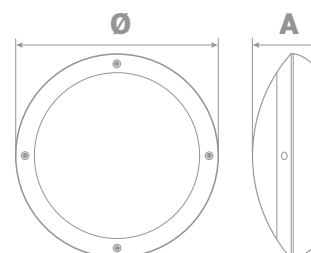
Adjustable CCT

Technical data:

Use:	Outdoor
Power:	14W
Lumens:	1490Lm
Useful lumens:	2000Lm ^{360°}
Installation mode:	Surface-mounted
Application mode:	Wall / Ceiling
Adjustable CTT:	3000K 4000K 5700K
Dimmable:	No
Type of led:	LED SMD 2835
Beam angle:	120°
Power supply:	200-240V AC (50-60Hz)
Colour rendering index:	≥80
Power factor:	>0,9
Output current:	190mA
IP code:	IP65
Impact resistance rating:	IK08
Lifespan:	50.000h
ON/OFF switching cycles:	35.000
Energy efficiency class:	A+ D
Product material:	Body: ABS Optics: Polycarbonate UV protection
Insulation class:	□
Standards:	CE and RoHS

LED BULKHEAD LIGHT

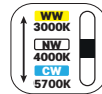
REF	ØxA	Box	Box	EAN.
ASPEXT14C3BR	300x95mm	1	6	5604612724580
ASPEXT14C3PR		1	6	5604612724597



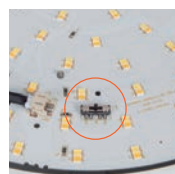
PEXT SERIES



FLICKER FREE



Pre cut for entrance / exit of cables



Adjustable CCT

Main features:

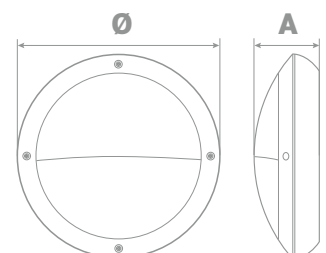
- > High lumen efficiency: >100lm/W (Total Lumens) / Light Source: 140lm/W (Useful Lumens)
- > Adjustable CCT (3000K/4000K/5700K) with built-in DIP switch on LED chip.
- > IP65 water and dust proof for the whole luminaire.
- > IK08 mechanical protection against impacts.
- > Cable entry at the end as well as at the rear, which allows its use in different application areas.
- > Quick installation, through quick connector that enables Loop in/Loop out.

Technical data:

Use:	Outdoor
Power:	14W
Lumens:	1190Lm
Useful lumens:	2000Lm ^{360°}
Installation mode:	Surface-mounted
Application mode:	Wall
Adjustable CTT:	3000K 4000K 5700K
Dimmable:	No
Type of led:	LED SMD 2835
Beam angle:	120°
Power supply:	200-240V AC (50-60Hz)
Colour rendering index:	≥80
Power factor:	>0,9
Output current:	190mA
IP code:	IP65
Impact resistance rating:	IK08
Lifespan:	50.000h
ON/OFF switching cycles:	35.000
Energy efficiency class:	A G
Product material:	Body: ABS Optics: Polycarbonate UV protection
Insulation class:	□
Standards:	CE and RoHS





EYELID LED BULKHEAD LIGHT

REF	ØxA	Box	Carton	EAN.
ASPEXTP14C3BR	300x97mm	1	6	5604612724610
ASPEXTP14C3PR		1	6	5604612724603





Technical data:

Power:	14W	14W
Lumens:	1490LM - 14W	1190LM - 14W
Adjustable CTT:	3000K / 4000K / 5700K	3000K / 4000K / 5700K
Type of led:	LED SMD 2835	LED SMD 2835
Power supply:	200-240V AC - 50-60Hz	200-240V AC - 50-60Hz
Beam angle:	120°	120°
Dimmable:	No	No
Lifespan:	50.000H	50.000H
ON/OFF switching cycles:	35.000	35.000
Colour rendering index:	CRI>80	CRI>80
Power factor:	0,9	0,9
IP code:	IP65	IP65
Insulation class:		
Energy efficiency class:		
Product dimensions:	Ø300x95mm	Ø300x97mm
Product weight:	0,75kg	0,75kg
Packaging dimensions:	305x305x105mm	305x305x105mm
Packaging weight:	1,10kg	1,10kg

Aslo

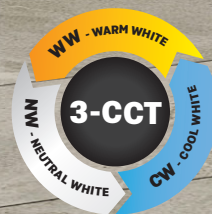
BRIGHTER LIFE



FOCUS SERIES DEEP TRIM DIMMABLE LED DOWNLIGHT

Indoor lighting - Recessed

aslo.pt



The new ASLO's recessed downlight "FOCUS" offers excellent light quality and high efficiency. It is available in white and black models and offers the possibility to switch between three **colour temperatures (3000/4000/5700K)**, allowing the distributors or installation technicians to reduce their stocks as this colour change ensures they always have available a product with the desired colour temperature.

Excellent glare reduction - they can take a deep regressed lamp with its LED module making it possible to reduce the brightness of the illumination and the intensity of the light in the eyes, keeping the light subtle and cosy and bringing a comfortable lighting effect.

Also noteworthy is the **"No Flicker"** feature for a truly comfortable visual experience.

It has 10W of power, an efficiency of 76 lm/W and a fantastic dimming range from 0 a 100%. It is a true professional option for everyday lighting installations.

FOCUS SERIES



Main features:

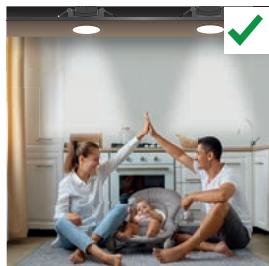
- > Adjustable colour temperature (3000K/4000K/5700K) with DIP switch built-in in the driver.
- > Quick connector included in the driver, makes the connection / electrical installation easier;
- > Triac dimmer, enables the control of the projected light intensity;
- > Flicker-free and anti-reflective;
- > Excellent reduction of glare.

Technical data:

Use:	Indoor
Power:	10W
Useful Lumens:	750Lm ^{90°}
Total Lumens:	780Lm
Efficient:	76Lm/W
Installation mode:	Recessed
Application mode:	Ceiling
Adjustable CCT:	3000K 4000K 5700K
Dimmable TRIAC:	Yes
Beam angle:	40°
Power supply:	220-240V AC (50-60Hz)
Colour rendering index:	>80
Output current:	28mA
IP code:	IP44
Lifespan:	40.000h
ON/OFF switching cycles:	15.000
Energy efficiency class:	A G F
Material:	Aluminum
Insulation class:	□
Standards:	CE and RoHS
Packaging dimensions:	135x115x80mm
Product weight:	0,255kg
Packaging weight:	0,345kg



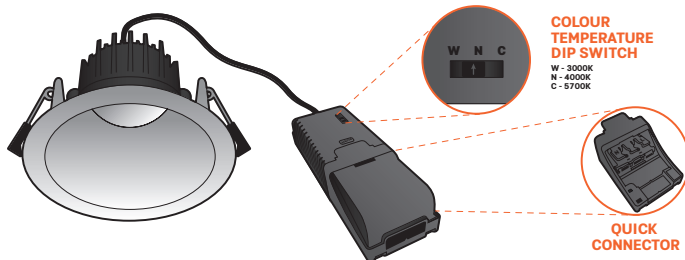
Reduction of glare



Anti-Glare: Reduction of uncomfortable lighting, comfortable light effect

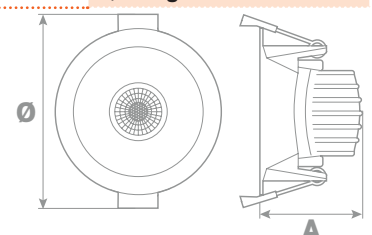


Product scheme



DEEP TRIM DIMMABLE LED DOWNLIGHT

REF	COLOUR	ØxA				EAN.
ASFOC10C3BR	WHITE	104x60	85~90	1	20	5604612724511
ASFOC10C3PR	BLACK	mm	mm	1	20	5604612724504



Aslo

BRIGHTER LIFE

HYDRA SERIES

**PROFESSIONAL
QUALITY DIMMABLE
LED DOWNLIGHT**

Indoor lighting - Recessed
aslo.pt



The new ASLO's recessed downlight "HYDRA" allows dimming and features 5W of power and an efficiency of 93 lm/W. Due to its **IP65 protection** rating and fire resistance, it has been specially designed for more specific environments that need a great protection against water, such as bathrooms saunas, swimming pools, outdoor areas, etc. Available in **neutral white (4000K)** and **cool white (5700K)**.

It is very simple to install and is ideal for both domestic and professional use.

HYDRA SERIES



Main features:

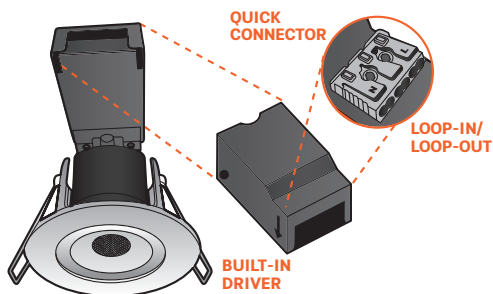
- > Driver and quick connector included, makes it easy to connect /electrical installation;
- > Triac dimmer, enables control of projected light intensity;
- > No flickering;
- > IP65 waterproof;
- > 30 / 60 /90 minutes fire test.

Technical data:

Use:	Indoor
Power:	5W
Useful Lumens:	370Lm ^{90°}
Total Lumens:	466Lm
Efficient:	93Lm/W
Installation mode:	Recessed
Application mode:	Ceiling
Temperature of color:	4000K or 5700K
Dimable TRIAC:	Yes
Beam angle:	60°
Power supply:	220-240V AC (50-60Hz)
Colour rendering index:	>80
Displacement factor:	>0,9
Output current:	14mA
IP code:	IP65
Lifespan:	40.000h
ON/OFF switching cycles:	15.000
Energy efficiency class:	A G F
Material:	Cast iron
Insulation class:	⊕
Standards:	CE and RoHS
Packaging dimensions:	95x90x75mm
Product weight:	0,140kg
Packaging weight:	0,195kg

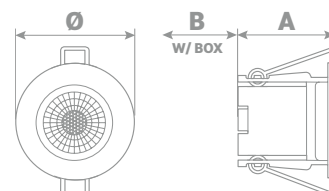


Product scheme



PROFESSIONAL QUALITY DIMMABLE LED DOWNLIGHT

REF ^a	K	ØxA				EAN.
ASHYD540BR	4000	80x50	50~60	1	20	5604612724467
ASHYD557BR	5700	mm	mm	1	20	5604612724474



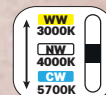
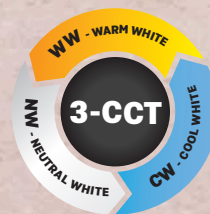
Aslo

BRIGHTER LIFE

STORE SERIES **ADJUSTABLE DIMMABLE LED DOWNLIGHT**

Indoor lighting - Recessed

aslo.pt



The new ASLO's adjustable dimmable downlight "STORE", manufactured to the highest quality standards, is ideal for the most demanding projects that require a product with high warranty. Made of high-quality aluminium, which acts as an excellent heat sink to prolong the life of the LED.

With white and black finish, it has a perfect design to create a simple, elegant and discreet decoration.

It includes a high-quality LED driver that is not integrated inside the luminaire, which increases the life of the luminaire by working at a lower temperature. The connection is made via a quick connector located inside a detachable box, which makes installation extremely simple and easy.

It is equipped with a colour temperature DIP switch, which is built-in on the external driver, offering the possibility to choose the desired colour for each environment, which makes this product ideal for lighting:

- Shop windows, showcases, counters in shops.
- Museums, art galleries, meeting rooms, offices.
- Hotels, restaurants, airports.
- Domestic lighting in corridors, bedrooms, living rooms, bathrooms or kitchens.

STORE SERIES

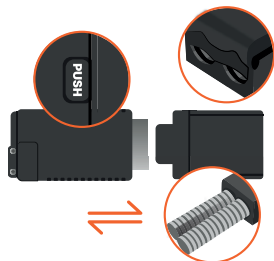


Main features:

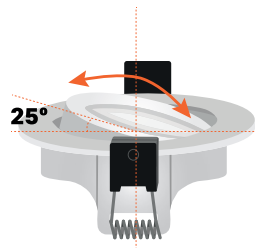
- > Driver and quick connector included, facilitates in electrical connection /installation;
- > Triac dimmer, enables control of projected light intensity;
- > High quality 50mm lens - uniform light;
- > DIP switch for choosing colour temperature - 3CCT;
- > No flickering.

Technical data:

Use:	Indoor
Power:	8W
Useful Lumens:	650Lm ^{90°}
Total Lumens:	699Lm
Efficient:	87Lm/W
Installation mode:	Recessed
Application mode:	Ceiling
Adjustable CCT:	3000K 4000K 5700K
Dimmable TRIAC:	yes
Beam angle - Lens:	38°
Power supply:	220-240V AC (50-60Hz)
Colour rendering index:	>80
Displacement factor:	0,9
Output current:	23mA
IP code:	IP44
Lifespan:	40.000h
ON/OFF switching cycles:	15.000
Energy efficiency class:	A F
Material:	Body: Aluminium
Insulation class:	□
Standards:	CE and RoHS
Packaging dimensions:	140x115x75mm
Product weight:	0,290kg
Packaging weight:	0,377kg

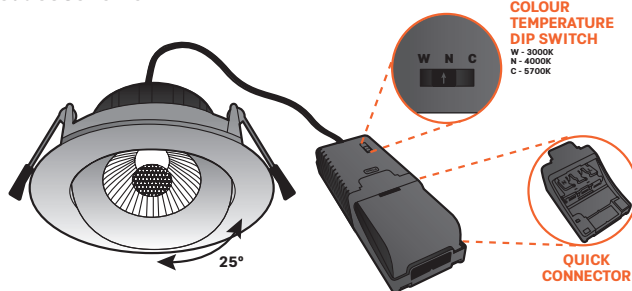


Quick plug-in terminals - Easy installation



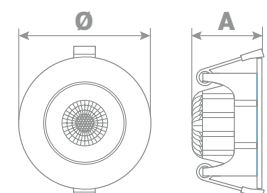
50mm lens with uniform light

Product scheme



ADJUSTABLE DIMMABLE LED DOWNLIGHT

REF ^a	COLOUR	ØxA				EAN.
ASST08C3BR	White	96x45	73~83	1	20	5604612724481
ASST08C3PR	Black	mm	mm	1	20	5604612724498



Aslo

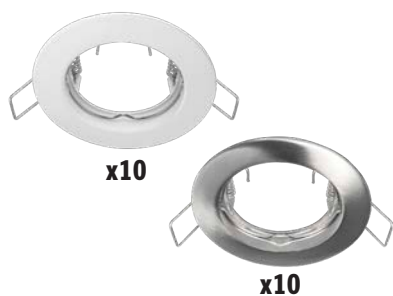
BRIGHTER LIFE



DOWNLIGHT FRAMES

Indoor lighting - Recessed

aslo.pt



FIXED ALUMINIUM DOWNLIGHT FRAME - SETS OF 10 UN.*

REF					EAN.
ASWL121ABRC10	78 mm	58 mm	10	100	5604612724252
ASWL121ANSC10			10	100	5604612724269

*Note: Lamp GU10 and GU10 holder not included, they must be purchased separately.



ROUND ADJUSTABLE ALUMINIUM DOWNLIGHT FRAME - SETS OF 10 UN.*

REF					EAN.
ASWL101ABRC10	78 mm	58 mm	10	100	5604612724191
ASWL101ANSC10			10	100	5604612724245

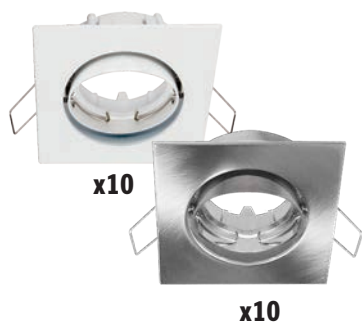
*Note: Lamp GU10 and GU10 holder not included, they must be purchased separately.



SQUARE FIXED ALUMINIUM DOWNLIGHT FRAME - SETS OF 10 UN.*

REF					EAN.
ASWL159ABRC10	75 mm	65 mm	10	100	5604612724290
ASWL159ANSC10			10	100	5604612724306

*Note: Lamp GU10 and GU10 holder not included, they must be purchased separately.



SQUARE ADJUSTABLE ALUMINIUM FRAME - SETS OF 10 UN.*

REF					EAN.
ASWL158ABRC10	80 mm	72 mm	10	100	5604612724276
ASWL158ANSC10			10	100	5604612724283

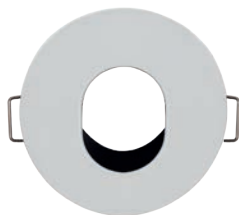
*Note: Lamp GU10 and GU10 holder not included, they must be purchased separately.



IP 20



RoHS



ROUND DOWNLIGHT FRAME*

REF	AxBxC	Ø	Beam	Box	Box	EAN.
ASWL360BBR	89x75x40 mm	89 mm	75 mm	1	100	5604612724078



*Note: Lamp GU10 and GU10 holder not included, they must be purchased separately.



SQUARE DOWNLIGHT FRAME*

REF	AxBxC	Diagonal	Beam	Box	Box	EAN.
ASWL361BBR	89x75x40 mm	89 mm	75 mm	1	100	5604612724085



*Note: Lamp GU10 and GU10 holder not included, they must be purchased separately.



IP 20



RoHS



DEEP TRIM FIXED ROUND DOWNLIGHT FRAME*

REF	AxBxC	Ø	Beam	Box	Box	EAN.
ASWL330BBR	92x80x62 mm	92 mm	80 mm	1	100	5604612724092

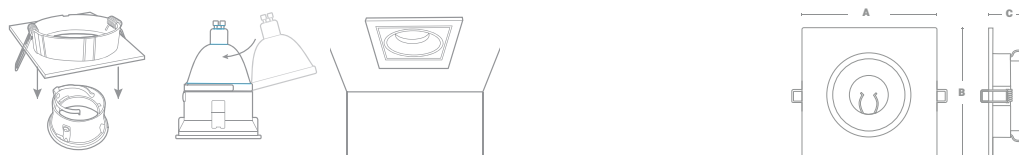


*Note: Lamp GU10 and GU10 holder not included, they must be purchased separately.



DEEP TRIM FIXED SQUARE DOWNLIGHT FRAME*

REF	AxBxC	Diagonal	Beam	Box	Box	EAN.
ASWL331BBR	92x80x45 mm	92 mm	80 mm	1	100	5604612724108



*Note: Lamp GU10 and GU10 holder not included, they must be purchased separately.



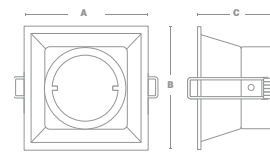
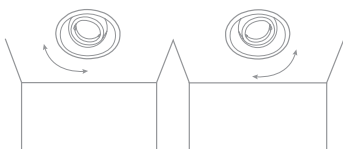
IP 20



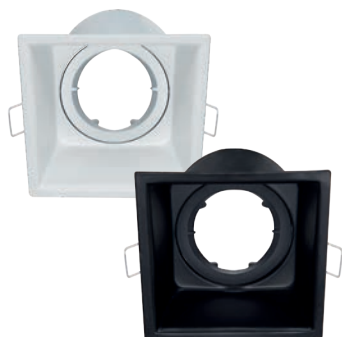
RoHS

DEEP TRIM ADJUSTABLE ROUND DOWNLIGHT FRAME*

REF	AxBxC	Ø	Ø	⊠	EAN.
ASWL207BR	88x80x60	88	80	100	5604612724115
ASWL207PR	mm	mm	mm	100	5604612724122



*Note: Lamp GU10 and GU10 holder not included, they must be purchased separately.



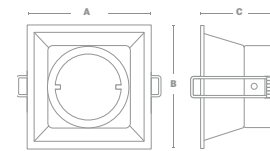
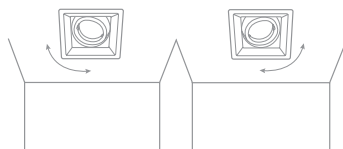
IP 20



RoHS

DEEP TRIM ADJUSTABLE SQUARE DOWNLIGHT FRAME*

REF	AxBxC	⊠	⊠	⊠	EAN.
ASWL223BR	88x80x60	88	80	100	5604612724139
ASWL223PR	mm	mm	mm	100	5604612724146



*Note: Lamp GU10 and GU10 holder not included, they must be purchased separately.

Aslo

BRIGHTER LIFE





PHAROS SERIES **SURFACE-MOUNTED SQUARE/ROUND DOWNLIGHT**

Indoor lighting - Surface - mounted



aslo.pt

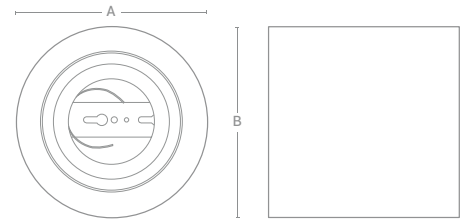


Technical data:



Use:	Indoor- Ceiling
IP code:	IP20
Accessories:	Lamp GU10 - Not included  GU10 Holder - Not included 
Product material:	Body: Aluminum
Standards:	CE and RoHS

SURFACE-MOUNTED ROUND DOWNLIGHT



REF	AxB			EAN.
ASPHRBR	94x90mm	1	50	5604612724153
ASPHRPR		1	50	5604612724160

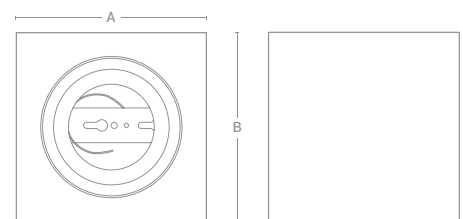


Technical data:

Use:	Indoor - Ceiling
IP code:	IP20
Accessories:	Lamp GU10 - Not included  GU10 holder - Not included 
Product material:	Body: Aluminum
Standards:	CE and RoHS

SURFACE-MOUNTED SQUARE DOWNLIGHT

REF	AxB			EAN.
ASPHQBR	94x90mm	1	50	5604612724177
ASPHQPR		1	50	5604612724184



Aslo

BRIGHTER LIFE

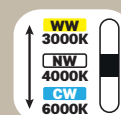
VANTAGE SERIES



RECESSED LED DOWNLIGHT

Indoor Lighting

aslo.pt





VANTAGE SERIES

Full range of recessed LED downlights from Vantage series with LED chip, of different sizes and power, with colour temperature selector. Ideal for achieving low consumption and high energy efficiency in domestic or commercial lighting.

They offer an attractive, elegant design, are perfect for installation in suspended ceilings, cabinets, showcases and can be perfectly integrated into any environment: homes, offices, supermarkets, restaurants, corridors, lifts, etc.

Thanks to the colour temperature selector, they offer the possibility of choosing the colour required for each environment.

The Vantage series guarantees the possibility of replacing external drivers and LED chips.

RECESSED LED DOWNLIGHT

Main features:

- > Adjustable CTT: 3000K, 4000K and 6000K;
- > Led chip;
- > No flickering

Technical data:

Use:	Indoor
Color temperature:	3000K 4000K 6000K
Chip led:	Philips SMD 2830
Driver:	Lifud
Beam angle:	120°
Power supply:	175-265V AC (50-60Hz)
Colour rendering index:	>80
IP code:	IP40
Lifespan:	35.000h
ON/OFF switching cycles:	15.000
Installation mode:	Recessed
Product material:	Body: Aluminum Diffuser: Polystyrene
Insulation class:	
Standards:	CE e RoHS



RECESSED LED DOWNLIGHT - SQUARE

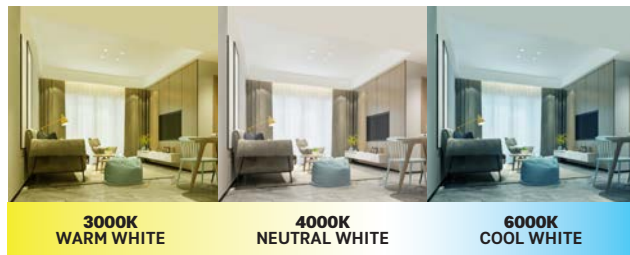
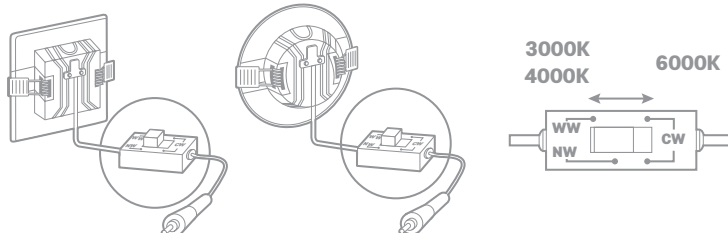
REF	W	LM	K					EAN.
ASVANQ6C3	6	510 ^{120°}		90x90mm	75x75mm	1	40	5604612724450
ASVANQ12C3	12	1020 ^{120°}	3000	120x120mm	105x105mm	1	40	5604612724412
ASVANQ18C3	18	1800 ^{120°}	4000	170x170mm	155x105mm	1	30	5604612724429
ASVANQ24C3	24	2400 ^{120°}	6000	170x170mm	155x105mm	1	30	5604612724436
ASVANQ30C3	30	3000 ^{120°}		225x225mm	205x205mm	1	20	5604612724443

ADJUSTABLE CTT:

Choose the colour temperature that best suits your taste / environment.

Square:

Round:



3000K WARM WHITE

4000K NEUTRAL WHITE

6000K COOL WHITE

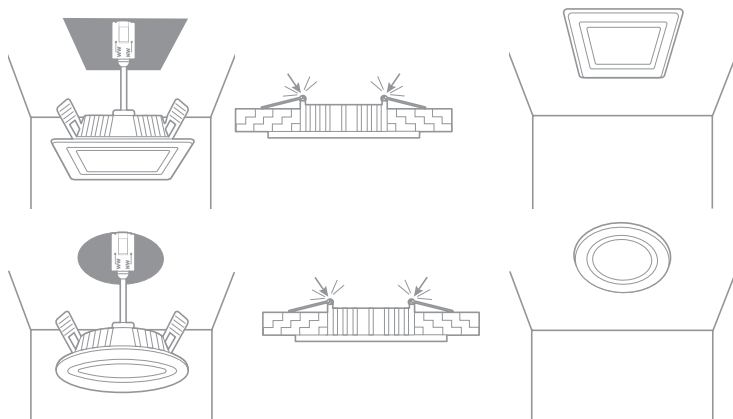
Suitable for living rooms and bedrooms.
+ Comfort;
+ cosiness;
+ Relaxation.

Suitable for offices.
+ Concentration;
+ Relaxation

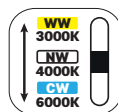
Suitable for kitchens and service areas.
+ Concentration;
+ Attention.

ASSEMBLY/INSTALLATION:

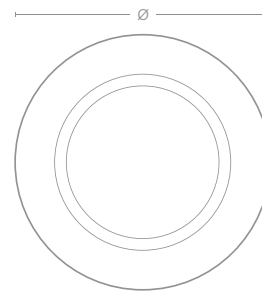
Cuadrado:



Round:



FLICKER FREE







RECESSED LED DOWNLIGHT - ROUND

REF	W	LM	K	∅				EAN.
ASVANR6C3	6	510 ^{120°}		90mm	75mm	1	40	5604612724368
ASVANR12C3	12	1020 ^{120°}	3000	120mm	105mm	1	40	5604612724375
ASVANR18C3	18	1800 ^{120°}	4000	170mm	155mm	1	30	5604612724382
ASVANR24C3	24	2400 ^{120°}	6000			1	30	5604612724399
ASVANR30C3	30	3000 ^{120°}		225mm	205mm	1	20	5604612724405



Technical data:

	6W 12W 18W 24W 30W	6W 12W 18W 24W 30W
Power:		
	510 ^{120°} LM - 6W 1020 ^{120°} LM - 12W 1800 ^{120°} LM - 18W 2400 ^{120°} LM - 24W 3000 ^{120°} LM - 30W	510 ^{120°} LM - 6W 1020 ^{120°} LM - 12W 1800 ^{120°} LM - 18W 2400 ^{120°} LM - 24W 3000 ^{120°} LM - 30W
Lumens:		
Color temperature:	3000K / 4000K / 6000K	3000K / 4000K / 6000K
Chip led:	Philips (SMD 2835)	Philips (SMD 2835)
Driver:	Lifud	Lifud
	LED SMD 2835 - 24Un (0,5W)LED SMD 2835 - 72Un (0,5W) LED SMD 2835 - 192Un (0,2W) LED SMD 2835 - 192Un (0,5W) LED SMD 2835 - 312Un (0,2W)	LED SMD 2835 - 24Un (0,5W) LED SMD 2835 - 72Un (0,5W) LED SMD 2835 - 192Un (0,2W) LED SMD 2835 - 192Un (0,5W) LED SMD 2835 - 312Un (0,2W)
Number of LEDs:		
Power supply:	175-265V AC - 50-60Hz	175-265V AC - 50-60Hz
Beam angle:	120°	120°
Dimmable:	No	No
Lifespan:	35.000H	35.000H
ON/OFF switching cycles:	15.000	15.000
Colour rendering index:	CRI>80	CRI>80
	>0,5 - 6W >0,7 - 12W, 18W and 24W >0,9 - 30W	>0,5 - 6W >0,7 - 12W, 18W and 24W >0,9 - 30W
Displacement factor:		
IP code:	IP40	IP40
Insulation class:		
Energy efficiency class:		
	6W - 90x90mm 12W - 120x120mm 18W and 24W - 170x170mm 30W - 225x225mm	6W - 90mm 12W - 120mm 18W and 24W - 170mm 30W - 225mm
Product dimensions:		
	6W - 125x120x35mm 12W - 150x140x40mm 18W and 24W - 195x195x40mm 30W - 250x245x40mm	6W - 125x120x35mm 12W - 150x140x40mm 18W and 24W - 195x195x40mm 30W - 250x245x40mm
Packaging dimensions:		
Weight with packaging:	6W - 185g 12W - 245g 18W - 429g 24W - 396g 30W - 640g	6W - 175g 12W - 215g 18W - 350g 24W - 356g 30W - 525g

Aslo

BRIGHTER LIFE



ADJUSTABLE

LAMP HOLDER FITTING



G10q lamp holder included



Includes 3 magnets for a better fixing



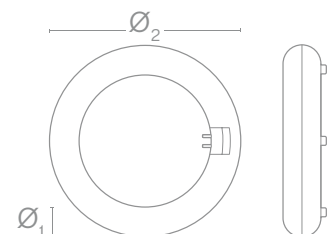
Technical data:

Use:	Indoor
Power:	15W 20W 30W
Lumens:	1500LM ^{360°} - 15W 2080LM ^{360°} - 20W 3200LM ^{360°} - 30W
Colour temperature:	6500K
Lamp holder:	G10q
Type of led:	Lumileds SMD 2835
Beam angle:	120°

Luminous efficacy:	>100 Lm/W
Voltage:	220-240V AC (50-60Hz)
Colour rendering index:	>80
Service life:	15.000h
ON/OFF switching cycles:	15.000
Installation mode:	Surface-mounted
Product material:	Polycarbonate
Standards:	CE and RoHS


LED CIRCULAR TUBE T9

REF	W	LM	K	Ø ₁	Ø ₂	⊞	⊞	EAN.
ASLLC1565	15	1500LM ^{360°}			215mm	1	10	5604612722807
ASLLC2065	20	2080LM ^{360°}	6500	30 mm	300mm	1	10	5604612722814
ASLLC3065	30	3200LM ^{360°}			400mm	1	10	5604612722821





Technical data:

Power:	15W 20W 30W
Lumens:	1500 ^{120°} LM - 15W 2080 ^{120°} LM - 20W 3200 ^{120°} LM - 30W
Colour temperature:	6500K
Lamp holder type:	G10q
Type of led:	LED SMD 2835
Voltage:	220-240V AC - 50-60Hz
Beam angle:	120°
Dimable:	No
Service life:	15.000H
ON/OFF switching cycles:	15.000
Colour rendering index:	CRI>80
Displacement factor:	≥0,7 - 15W and 20W ≥0,9 - 30W
Energy efficiency class:	
Product dimensions:	Ø215mm - 15W Ø300mm - 20W Ø400mm - 30W
Packaging dimensions:	15W - 220x220x38mm 20W - 306x306x38mm 30W - 406x406x38mm
Weight with packaging:	15W - 242g 20W - 386g 30W - 563g